

Warehousing



A Faster Way to Build



Widths 30' to 200' by any length



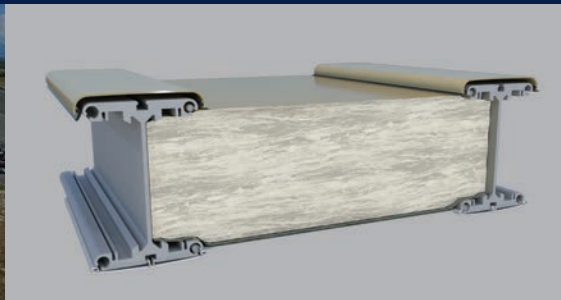
Large clearspan interiors



Lease or purchase



Insulated and uninsulated warehousing



Optional highly efficient fiberglass insulation system



Available immediately from inventory



A Faster Way to Build

Engineered relocatable structures provide immediate warehousing solutions

North America toll free:
1 800 528.9899
 US direct dial:
801 280.1555
 Canada direct dial:
403 601.2292

info@sprung.com

Warehousing

A Faster Way to Build
Engineered & Manufactured by Sprung Instant Structures



Polar Air
Schiphol Airport, Holland
Three - 130' wide x 280' long

"Polar Air Cargo is a global leader in the international air cargo market, specializing in time-critical, airport-to-airport scheduled freight service.

Polar Air Cargo was in a difficult situation. We had outgrown our existing facilities in Liege, Belgium and were looking for a more strategically located airport to better service our existing clientele. Schiphol Airport seemed the obvious choice for our relocation with one major issue:

Schiphol could not provide us with the required 110,000 sq. ft. (10,219 square meters) of warehouse space we required. The airport had available land but not enclosed space. Polar Air looked into alternative building solutions that would meet a very short time frame for delivery and installation.

After reviewing all of our options, there was only one company that could meet our requirements. Sprung Structures delivered and installed three structures in just eight weeks."

Dan Lansing
Director Properties and Facilities

Hurricane Katrina

Shortly after category 5 Hurricane Katrina hit the Gulf coast, Sprung supplied engineered structures for a wide array of applications including Salvation Army distribution facilities, Dole food distribution facilities, New Orleans correctional facility replacement, parish school gymnasiums as well as churches and numerous other structures for infrastructure replacement. Sprung structures are designed and engineered to meet coastal building code wind load requirements.



Global Auto Processing Services
Port Hueneme, California

"Global Auto Processing Services (GAPS) established a full-service automotive processing facility at the US Naval facility at Port Hueneme, California.

GAPS uses Sprung structures that are designed to allow easy expansion to meet future processing needs. Since opening our facility at Port Hueneme, GAPS has purchased six prefabricated Sprung structures for our Vehicle Prep Center.

Two challenges in our industry are to provide structures for new customers and to expand structures for existing customers. Sprung structures provide an immediate, reliable, cost effective and flexible solution for automotive vehicle processing."

Michael "Song" Wynn
Sr. Ex. Vice President
Global Auto Processing Services, Inc.



Sprung Instant Structures, Inc.
5711 West Dannon Way
West Jordan, Utah 84081

Toll Free: 1 800 528.9899
Direct Dial: 1 801 280.1555
Fax: 1 801 280.7072

Sprung Instant Structures Ltd.
PO Box 62, Maple Leaf Road
Aldersyde, Alberta, Canada T0L 0A0

Toll Free: 1 800 528.9899
Direct Dial: 1 403 601.2292
Fax: 1 403 601.4833

Sprung Structures DWC-LLC
PO Box 712185, Dubai, United Arab Emirates
Telephone: +971.508312274

Sprung Instant Structures E.C.
Office 45 Building 225, Road 28, Block 328
Siqqayah Manama 999, Bahrain BH 26105
Telephone: 9 733 951 1127

North America toll free:
1 800 528.9899
US direct dial:
801 280.1555
Canada direct dial:
403 601.2292

info@sprung.com