

Environmental Remediation



A Faster Way to Build



Negative pressure capable



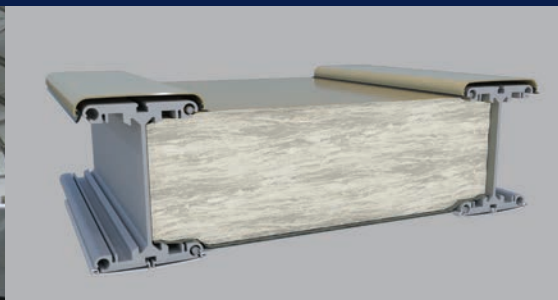
Widths 30' to 200' by any length



Tall peak heights



Large clearspan interiors



Optional highly efficient fiberglass insulation system



Flexible design



**A Faster
Way to Build**

Reliable engineered tensioned
membrane structure technology.

North America toll free:
+ 1 800 528 9899
US direct dial:
+ 1 801 280 1555
Canada direct dial:
+ 1 403 601 2292

info@sprung.com

Environmental Remediation

A Faster Way to Build
Engineered & Manufactured by Sprung Instant Structures



Environmental Remediation 40 foot radius crane-liftable structure

A Sprung structure was needed for this remediation operation with very specific needs. The small structure has crane-lifting hooks, allowing it to be utilized and moved around the larger remediation site.

Lead recycling activities were conducted in the area leaving corroded scrap metals, remnants of military ordnance and burn residue ash.

The structure also needed to handle a negative pressure using a charcoal filtration system. Workers in full Level-A protective gear conducted remedial investigations in a vapor containment Sprung structure. The limited foundation requirements and relocatability were also factors in choosing Sprung.

When in place the structure was anchored with ballast weights (110 gallon plastic drums filled with sand).

Mustard Gas Remediation Hiratsuka, Japan

130' wide x 190' long, 100' wide x 40' long, 70' wide x 20' long, 50' wide x 25' long

Japan is one of the world's most densely populated countries. Commercial and residential development co-exist in most communities. During the construction of a freeway, a deposit of small bottles containing mustard gas from the World War II era were discovered buried in the soil.

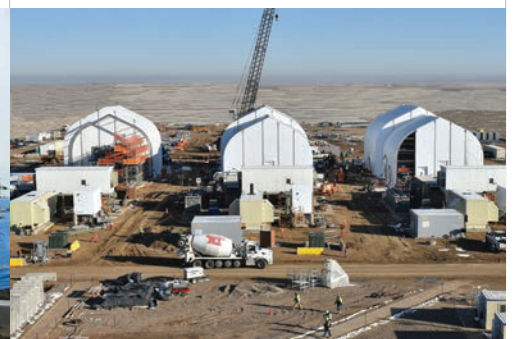
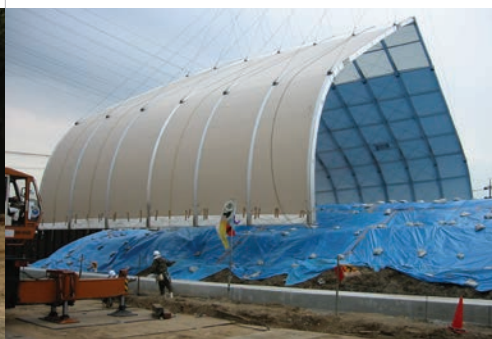
An immediate shut down of construction for an extremely time-critical freeway was ordered. One broken bottle had the potential to kill hundreds of surrounding residents. Needless to say, the surrounding community was relieved when the Sprung structures were erected.

The project received rave reviews throughout the Japanese media. As soon as the structure was erected, the soil containing the bottles had to be meticulously sifted by hand. The Sprung structure, which included a sophisticated negative pressure air handling system, ensured that if a bottle was broken, the gas would not escape into the surrounding communities.

Pueblo Chemical Agent-Destruction

Bechtel was contracted to destroy 2,600 tons of surplus chemical weapons stored at the U.S. Army Pueblo Chemical Depot in Colorado, to accelerate the destruction to meet commitments to Congress and international treaty by end of 2023. PCAPP is safely destroying the stockpile of chemical weapons in storage at the U.S. Army Pueblo Chemical Depot in Colorado.

Workers at the Pueblo Chemical Agent-Destruction Pilot Plant (PCAPP) began erecting three Sprung Structures to cover the first Static Detonation Chamber unit. The enclosed structure allows workers to continue final installation activities of the SDC units in inclement weather. PCAPP's third Immobilized Cell Bioreactor module was seeded with bacterial culture to handle an increase in hydrolysate production. As of December 19, 64,215 mortar rounds have been reconfigured, and as of December 13 the total amount of agent destroyed is 1,148.9 U.S. tons.



Sprung Instant Structures, Inc.
5711 West Dannon Way
West Jordan, Utah 84081

Toll Free: 1 800 528 9899
Direct Dial: 1 801 280 1555
Fax: 1 801 280 7072

Sprung Instant Structures Ltd.
PO Box 62, Maple Leaf Road
Aldersyde, Alberta, Canada T0L 0A0

Toll Free: 1 800 528 9899
Direct Dial: 1 403 601 2292
Fax: 1 403 601 4833

Sprung Structures DWC-LLC
PO Box 712185, Dubai, United Arab Emirates
Telephone: +971 508312274

Sprung Instant Structures E.C.
Office 45 Building 225, Road 28, Block 328
Siqqayyah Manama 999, Bahrain BH 26105
Telephone: +973 39511127

North America toll free:
+ 1 800 528 9899
US direct dial:
+ 1 801 280 1555
Canada direct dial:
+ 1 403 601 2292

info@sprung.com