

Manufacturing



A Faster Way to Build

Large clear-span interiors, 30' to 200' by any length.



Crane liftable



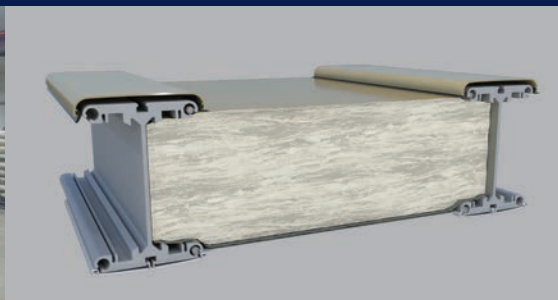
Dining/Food services facilities



Manufacturing facilities



Fabrication



Optional highly efficient fiberglass insulation system



On-site warehousing



A Faster Way to Build

Engineered, relocatable structures designed to expand capacity immediately at manufacturing facilities worldwide.

North America toll free:
1 800 528.9899

US direct dial:
801 280.1555

Canada direct dial:
403 601.2292

info@sprung.com

Manufacturing

A Faster Way to Build
Engineered & Manufactured by Sprung Instant Structures



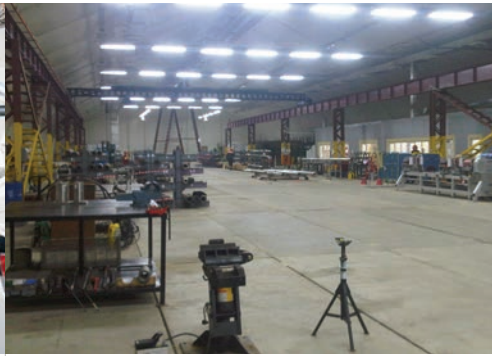
Tesla Inc. - California
150' wide x 915' long

Tesla needed to add additional production capacity immediately, for their new model 3 vehicle, in Fremont, California.

Tesla had two existing Sprung structures and decided that a 150' wide x 915' long Sprung structure was the fastest solution. The structure was delivered and constructed in 19 days. An assembly line was constructed inside the structure in conjunction with the structure erection. Production was able to start while the finishing touches on the structure were completed.

"No standard automotive solution could be built in time," said Musk, "so we created a new solution. It is working and has slightly higher quality than the more traditional general assembly line. Perhaps most surprising is that the total cost of production in the Sprung is lower."

"Amazing work by the Tesla team. Built entire new general assembly plant in three weeks with minimal resources"
- Elon Musk



Weatherford International
100' wide x 470' long

Weatherford International needed an immediate facility for their Siberian gas field operations.

After reviewing a number of building alternatives, it was determined that the Sprung product would be an ideal solution for their new manufacturing facility due in part to speed of delivery and construction as well as a proven track record in remote locations. The clearspan design was also an important requirement to accommodate a large gantry crane.

This 100' wide x 470' long Sprung structure includes a 9 inch thick layer of Johns Manville formaldehyde free fiberglass blanket insulation as well as a full height interior partition, and three 16' x 16' rolling service doors.

Sprung supplied low temperature arctic membrane for this project which is designed exclusively for cold weather applications.

This manufacturing facility includes a full scale machine shop, lathes, crane and storage racking and a calibration room.



Skanska/Intel - Oregon
120' wide x 270' long

A Sprung Structure was used during a massive \$8 billion upgrade at the Sanksa/ Intel plant in Hillsboro Oregon and Chandler, Arizona. The expansion will make the facilities the most advanced chip making plants in the world.

Sanksa, one of the world's leading project development and construction groups was tasked with completing the project. They used a 120' wide x 270' long non-insulated structure to house their third on-site lunchroom facility, with a capacity of 1,954 people. There are a total of 6 Sprung structures at the site.



Sprung Instant Structures, Inc.
5711 West Dannon Way
West Jordan, Utah 84081

Toll Free: 1 800 528.9899
Direct Dial: 1 801 280.1555
Fax: 1 801 280.7072

Sprung Instant Structures Ltd.
PO Box 62, Maple Leaf Road
Aldersyde, Alberta, Canada T0L 0A0

Toll Free: 1 800 528.9899
Direct Dial: 1 403 601.2292
Fax: 1 403 601.4833

Sprung Structures DWC-LLC
PO Box 712185, Dubai, United Arab Emirates
Telephone: +971.508312274

Sprung Instant Structures E.C.
Office 45 Building 225, Road 28, Block 328
Siqqayyah Manama 999, Bahrain BH 26105
Telephone: 9 733 951 1127

North America toll free:
1 800 528.9899
US direct dial:
801 280.1555
Canada direct dial:
403 601.2292

info@sprung.com