

Public Works



A Faster Way to Build

Maintenance free, highly tensioned exterior membrane. Does not have to be re-tensioned for the life of the building.



Widths 30' to 200' by any length



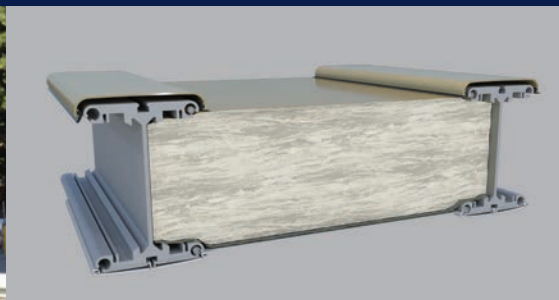
Sand and salt storage



Large clearspan interiors



Lease or purchase



Optional highly efficient fiberglass insulation system



Large assortment of cargo door options



A Faster Way to Build

Reliable engineered, relocatable structures designed for public works operations. Sprung's rust-free aluminum substructure comes with a 50-year, pro-rata guarantee.

North America toll free:
1 800 528.9899
US direct dial:
801 280.1555
Canada direct dial:
403 601.2292

info@sprung.com

Public Works

A Faster Way to Build
Engineered & Manufactured by Sprung Instant Structures



**Nevada Department of Transportation
- 29 structures at different locations**

Nevada Department of Transportation (NDOT) purchased their first Sprung structure in 1994. The structure was used over 19 years, with no damage, in the high wind area, Washoe Valley. NDOT has continued to use Sprung structures to protect its sand and salt piles across the State of Nevada.

"Sprung Structures and their pre-engineered building system have proven to be an excellent means of protecting NDOT's sand/salt stockpiles. They are the only manufacturer we have found using aluminum framework, proven to be the best solution when storing sand and salt."

"Sprung has established an excellent reputation with NDOT, both in the Reno/Tahoe area and across the state of Nevada. Our position is one of extreme satisfaction with your product and would not hesitate to share our experiences with other public works or transportation departments."

**Sweetwater County Salt Storage
- Rock Springs and Green River,
Wyoming**

**60' wide by 120' long Rock Springs
60' wide by 75' long Green River**

Sweetwater County has two salt storage structures that sit upon 6 foot concrete walls, have flat ends and a large 15' wide x 21' high rolling service door in both ends. Both structures utilize our premium Kynar coated exterior membrane in a wainscot pattern featuring a mediterranean olive upper and desert sand bottom.

**Sustainable Salt Storage Solutions
- City of Chicago, Illinois**

The City of Chicago Department of Streets and Sanitation needed to accommodate a large salt storage facility in the Chinatown region of the city. It was determined that the best location for the proposed structure was on leased land owned by the Illinois Department of Transportation. After careful review of various building alternatives, the City of Chicago chose a 70' wide x 490' long Sprung structure. The determining factor was the Sprung structure's fully-enclosed, modular design which could easily be relocated should the existing land need to be developed in the future. During several years of use, operations personnel claimed the salt stored in the Sprung structure was the driest and best spreading salt of all the City's storage sites.

Shortly there after, the City of Chicago purchased an additional 20,000 ton capacity Sprung structure featuring a relocatable 10' high retaining wall system.



Sprung Instant Structures, Inc.
5711 West Dannon Way
West Jordan, Utah 84081

Toll Free: 1 800 528.9899
Direct Dial: 1 801 280.1555
Fax: 1 801 280.7072

Sprung Instant Structures Ltd.
PO Box 62, Maple Leaf Road
Aldersyde, AB, Canada T0L 0A0

Toll Free: 1 800 528.9899
Direct Dial: 1 403 601.2292
Fax: 1 403 601.4833

Sprung Structures DWC-LLC
PO Box 712185, Dubai, United Arab Emirates
Telephone: 971508312274

Sprung Instant Structures E.C.
Office 45 Building 225, Road 28, Block 328
Siqqayyah Manama 999, Bahrain BH 26105
Telephone: 97339511127

North America toll free:
1 800 528.9899
US direct dial:
801 280.1555
Canada direct dial:
403 601.2292

info@sprung.com