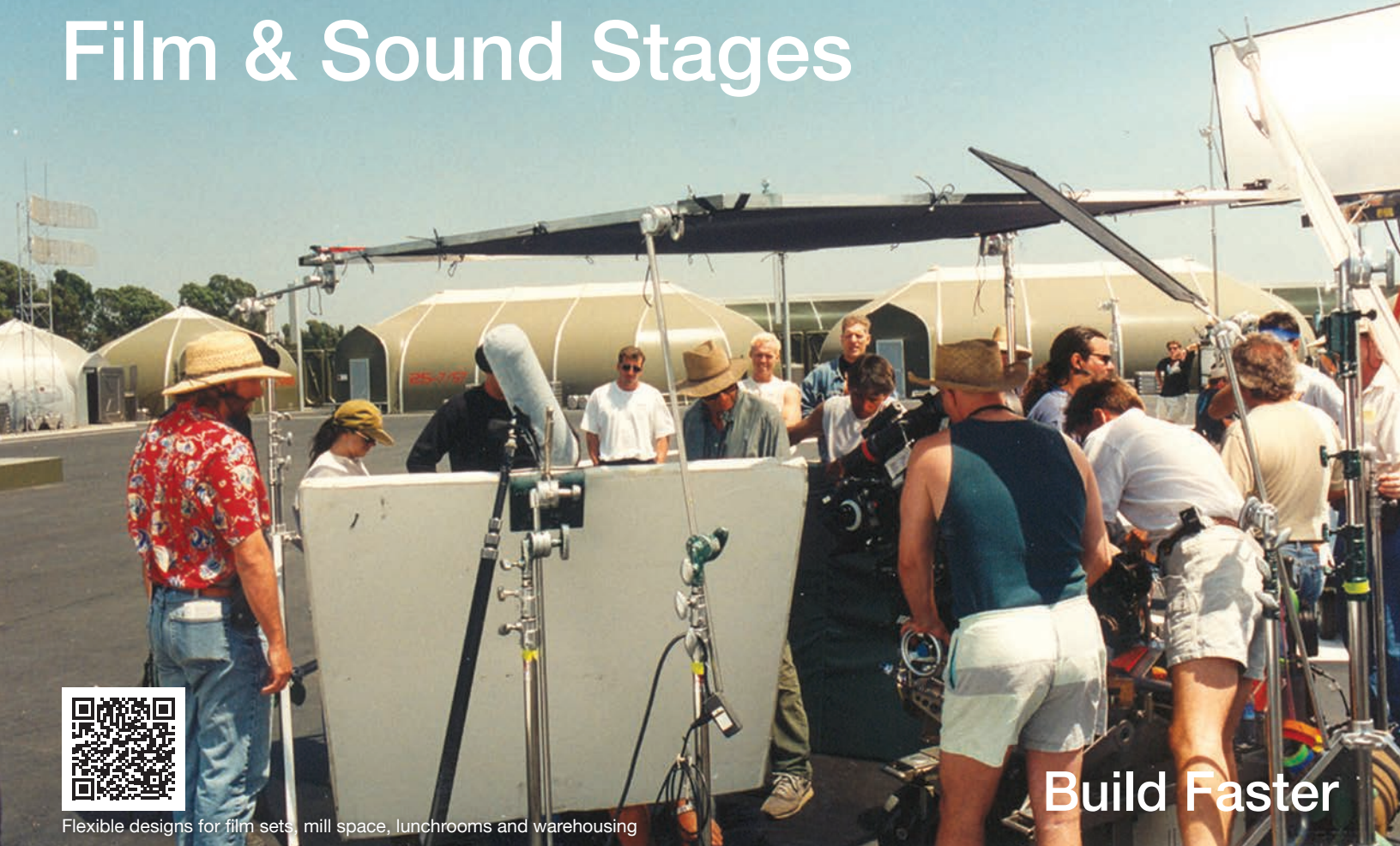


Film & Sound Stages



Flexible designs for film sets, mill space, lunchrooms and warehousing

Build Faster



Lease or purchase - *Borealis*



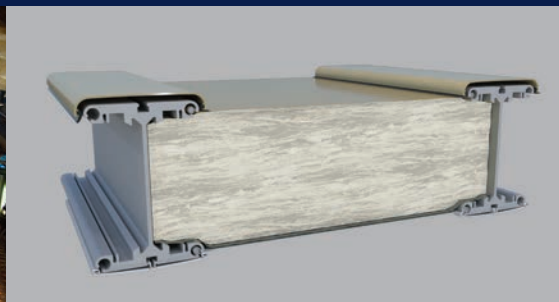
Relocatable - *Starship Trooper*



Exterior membrane options-*Les Temps Changent*



Film set - *HBO Big Love*



Optional highly efficient fiberglass insulation system



Large clearspan mill space



Engineered, relocatable structures designed for multi-purpose film industry applications. Immediate delivery from inventory.

North America toll free:
1 800 528.9899
 US direct dial:
801 280.1555
 Canada direct dial:
403 601.2292

info@sprung.com

Film

Build Faster

Engineered & Manufactured by Sprung Instant Structures



Deck the Halls
Vancouver, British Columbia
130' wide x 260' long
- peak height 48 feet

The hit movie Deck the Halls starring Danny Devito and Matthew Broderick was shot on location in Vancouver, British Columbia, Canada.

The movie required numerous winter scenes. As the film was being shot in the spring, the production company All Lit Up determined that it would be beneficial to enclose the two main houses where most of the filming was taking place. The night-time shots could then be taken during the day to maximize efficiencies of both the actors and film crew in addition to capturing the winter environment.

The structure was assembled and crane lifted into place over two existing homes in the City of White Rock near Vancouver. An additional opaque black interior membrane was added to enhance the night time filming environment.

Sprung Structure's in-house, short-term lease program made it a cost-effective solution to capture the important scenes of the movie.



Starship Troopers

Sprung structures were selected as the product of choice for the "Planet P Station" set, a remote planet outpost. Set design had to look futuristic as the movie was set in the 23rd century. Due to the unique specifications required to achieve a high tech futuristic look, several Sprung structures were leased as film sets and then relocated to the various sites required for filming.

Enormous cost savings were realized on this production because Sprung structures were able to house each of the various department needs on site. Special effects, wardrobe, props, craft services, grid department and set construction all had their own structures. All of the structures were subsequently dismantled and relocated to a second film location.

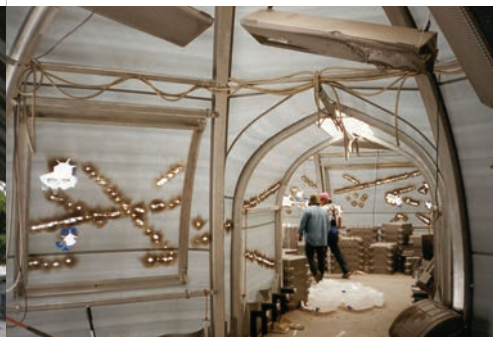


HBO Big Love
Santa Clarita, California
40' wide x 50' long

A key plot point of Big Love, a long running HBO TV series, was starting a gaming operation with a local First Nations Tribe.

The production manager and location manager investigated what a typical tribal gaming facility looked like and toured a number of facilities. At the Soboba Casino, in California, the HBO team noticed that the casino was housed in a Sprung structure. After completing research on Sprung, HBO purchased two Sprung structures which became the actual set for the last two years of the series.

The structures were erected inside a sound stage in Santa Clarita. Many of the interior design elements were emulated from existing Sprung casinos. The large clear span interior was ideal for filming and the ability of the Sprung frame work to carry heavy loads made hanging the lighting grids and cameras a breeze.



Sprung Instant Structures, Inc.
 5711 West Dannon Way
 West Jordan, Utah 84081

Toll Free: 1 800 528.9899
 Direct Dial: 1 801 280.1555
 Fax: 1 801 280.7072

Sprung Instant Structures Ltd.
 PO Box 62, Maple Leaf Road
 Aldersyde, Alberta, Canada T0L 0A0

Toll Free: 1 800 528.9899
 Direct Dial: 1 403 601.2292
 Fax: 1 403 601.4833

Sprung Structures DWC-LLC
 PO Box 712185, Dubai, United Arab Emirates
 Telephone: +971.508312274

Sprung Instant Structures E.C.
 Office 45 Building 225, Road 28, Block 328
 Siqayyah Manama 999, Bahrain BH 26105
 Telephone: 9 733 951 1127

North America toll free:
1 800 528.9899
 US direct dial:
801 280.1555
 Canada direct dial:
403 601.2292

info@sprung.com