

# Golf



## Build Faster



Golf simulation facilities



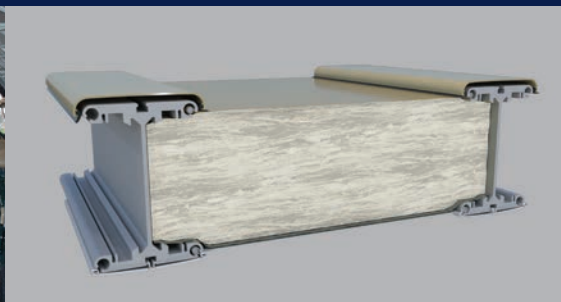
Hospitality



Pro shops



Lease or purchase



Optional highly efficient fiberglass insulation system



Daylight panel in peak allows natural light



Immediate cost  
effective golf course  
building solutions.

North America toll free:  
**1 800 528.9899**

US direct dial:  
**801 280.1555**

Canada direct dial:  
**403 601.2292**

[info@sprung.com](mailto:info@sprung.com)

# Golf

**Build Faster**

Engineered & Manufactured by Sprung Instant Structures



**Champions Run Golf Course  
Omaha, Nebraska  
60' wide x 90' long and a 30' round**

Champions Run Golf Course elected to replace their tents with Sprung structure technology:

- Engineered to handle extreme wind loads
- 8 inch fiberglass insulation
- Daylight panels in the peak providing an optimum amount of natural light
- A rust free aluminum substructure complete with a 50 year pro rata guarantee
- A wide range of exterior color choices and optional accessories.

*"Thank you for all your help in getting our new Sprung structure built. We decided late in 2005 that our existing tent was no longer helping us create revenue in the winter months and costing us far too much to rent during the summer (approximately \$10,000 a month). The new structure has already increased our revenue and is attracting many new events for the upcoming year."*

Justin D. Cox, Director of Business Operations, Champions Run



**Harding Park - San Francisco, CA  
30' wide x 60' long  
40' wide x 120' long**

Harding Park Golf Course restoration has been a continuing focus of golf industry attention, and the improvements were completed on the basis of returning a PGA Tour event to its storied grounds. Harding Park recently played host to the 2005 World Golf Championship. In 2009 Harding Park hosted the President's Cup.

*"Just wanted to let you know how pleased we are with our new cart storage facility that houses our 87 golf carts and two beverage carts. The Sprung structure was an ideal choice for the new cart barn. The structure was erected quickly and easily. The cart chargers were easily suspended from the structure's frame and the color and shape of the structure make it a welcome addition to the landscape. The clear span space gave us the flexibility to use the structure as a welcoming center when we hosted the 2005 American Express Championship."*

Rick Thall Project Manager  
City & County of San Francisco  
Department of Public Works  
Bureau of Engineering



**K-Club - County Kildare, Ireland  
50' wide x 100' long**

When the K Club, home of the 2006 Ryder Cup needed a swift effective solution to their requirement for Clubhouse facilities, they examined all options available to achieve their key objectives:

- Uniqueness
- Comprehensive facilities
- Comfort in all weather conditions
- Short-term construction period

*"In particular we were keen to avoid the traditional approaches of other golf clubs when providing temporary facilities. We found in Sprung Structures an effective and attractive alternative, which fulfilled all our needs and enabled us to provide the standards on which the K Club prides itself."*

Paul Crowe, Director of Golf  
Deputy Chief Executive

After use as a clubhouse for more than a decade, K Club renovated the structure in 2020 to become K Golf World: a state-of-the-art simulation facility featuring the most precise golfing technology in the world. K Golf World includes 8 high performance golf simulators, a full-service bar and kitchen.



**Sprung Instant Structures, Inc.**  
5711 West Dannon Way  
West Jordan, Utah 84081

Toll Free: 1 800 528.9899  
Direct Dial: 1 801 280.1555  
Fax: 1 801 280.7072

**Sprung Instant Structures Ltd.**  
PO Box 62, Maple Leaf Road  
Aldersyde, Alberta, Canada T0L 0A0

Toll Free: 1 800 528.9899  
Direct Dial: 1 403 601.2292  
Fax: 1 403 601.4833

**Sprung Structures DWC-LLC**  
PO Box 712185, Dubai, United Arab Emirates  
Telephone: +971.508312274

**Sprung Instant Structures E.C.**  
Office 45 Building 225, Road 28, Block 328  
Siqqayyah Manama 999, Bahrain BH 26105  
Telephone: 9 733 951 1127

North America toll free:  
**1 800 528.9899**  
US direct dial:  
**801 280.1555**  
Canada direct dial:  
**403 601.2292**

[info@sprung.com](mailto:info@sprung.com)