

# Museums

## Build Faster



Ballast weighted temporary structure for exhibit



Capable of hanging lighting and sound fixtures



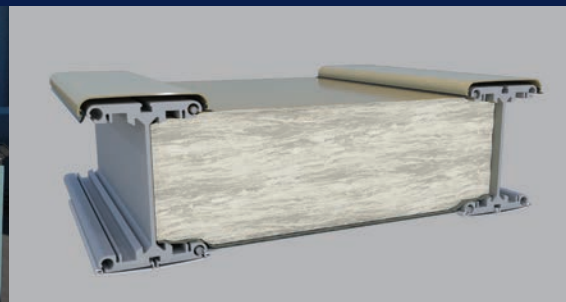
Large clearspan interiors



Excellent acoustics



Large assortment of window and door options



Optional highly efficient fiberglass insulation system



Widths 30' to 200' by any length



- Immediate delivery from inventory.
- Limited foundation requirements.
- Widths 30' to 200' by any length.
- Lease or purchase.

North America toll free:  
**+ 1 800 528 9899**  
 US direct dial:  
**+ 1 801 280 1555**  
 Canada direct dial:  
**+ 1 403 601 2292**

[info@sprung.com](mailto:info@sprung.com)



# Museums

**Build Faster**  
Engineered & Manufactured by Sprung Instant Structures



**First Flight**  
**The Wright Brothers National Memorial**  
**Kitty Hawk, North Carolina**  
70' wide x 114' long - exhibit hall  
70' wide x 142' long - hangar  
30' wide x 63' + connecting corridors

First Flight Foundation, project was built with wind loads of 130 mph, Exposure C, and a snow factor of 10 psf.

Located on the Outer Banks of North Carolina, the First Flight Centennial Foundation and the National Parks Service designed and built this museum to celebrate Wilbur and Orville Wright's historical flight over 100 years ago. The memorial includes an 11,000 sq. ft. auditorium with seating for 1,000 and an 8,000 sq. ft exhibition hall, which features a hangar door at one end that allows vintage aircraft to be brought into the hall for display.

**Getty Museum**  
**Cave Temples of Dunhuang Exhibit**  
**Los Angeles, California**  
40' wide x 90' long

A fully insulated Sprung structure was erected on the Getty's tram arrival plaza. The structure was used to house three full-scale replica cave temples of the Mogao Grottoes, a Buddhist religious site situated a short distance from the city of Dunhuang in northwestern China.

The "Cave Temples of Dunhuang Exhibit: Buddhist Art on China's Silk Road" was a temporary four month exhibit, May 7 to September 4, 2016. Displaying China's greatest supply of Buddhist wall paintings and sculptures. Because the Getty could not bring the actual cave temples to Los Angeles, three full-size replica caves had been created by the artists from the Dunhuang Academy's Fine Art Institute. On the exterior of the Sprung structure large foil murals were applied. Ballast weights were used to hold the structure down without destroying the plaza's travertine tiles.

**Cold War Exhibit**  
**The Military Museums**  
**Calgary, Alberta**  
50' wide x 80' long  
50' wide x 100' long

The Military Museums were looking for exhibit space for their Cold War Exhibit, marking the 40 year Cold War in which Canadian airmen roamed the skies. The exhibit space needed to accommodate a CF-18 Hornet, a CF-104 Starfighter and an F-86 Sabre aircraft.

*"Our Museum needed to expand in order to facilitate the addition of a CF-18 Hornet, a CF-104 Starfighter and an F-86 Sabre to begin creating our Cold War Exhibit. The bricks and mortar plan was too costly and too small. We turned to Sprung Structures for an alternative. We now have a new wing to our museum that is twice as large and at half the price. Visitors from around the world marvel at the overall impact of the structures, the aircraft and displays. Thank you Sprung for helping our vision come true years earlier than we would have dreamed!"*

*Don Matthews, Chairman,  
Air Force Museum Society of Alberta*



**Sprung Instant Structures, Inc.**  
5711 West Dannon Way  
West Jordan, Utah 84081

Toll Free: 1 800 528 9899  
Direct Dial: 1 801 280 1555  
Fax: 1 801 280 7072

**Sprung Instant Structures Ltd.**  
PO Box 62, Maple Leaf Road  
Aldersyde, Alberta, Canada T0L 0A0

Toll Free: 1 800 528 9899  
Direct Dial: 1 403 601 2292  
Fax: 1 403 601 4833

**Sprung Structures DWC-LLC**  
PO Box 712185, Dubai, United Arab Emirates  
Telephone: +971 508312274

**Sprung Instant Structures E.C.**  
Office 45 Building 225, Road 28, Block 328  
Siqqayyah Manama 999, Bahrain BH 26105  
Telephone: +973 3951 1127

North America toll free:  
**+ 1 800 528 9899**  
US direct dial:  
**+ 1 801 280 1555**  
Canada direct dial:  
**+ 1 403 601 2292**

[info@sprung.com](mailto:info@sprung.com)