

Community Pool Enclosures



Rust-free aluminum substructure

A Faster Way to Build



Encapsulated insulation packages



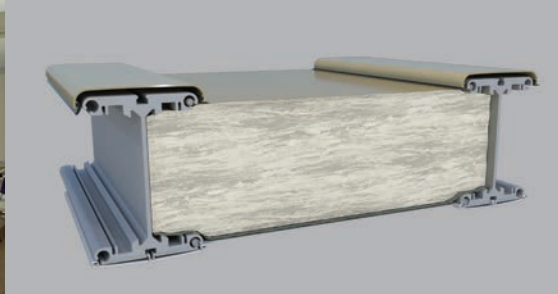
Bright spacious clearspan interiors



Immediate delivery from inventory



Daylight panels add natural light



Optional highly efficient fiberglass insulation system



Seasonal openings



A Faster Way to Build

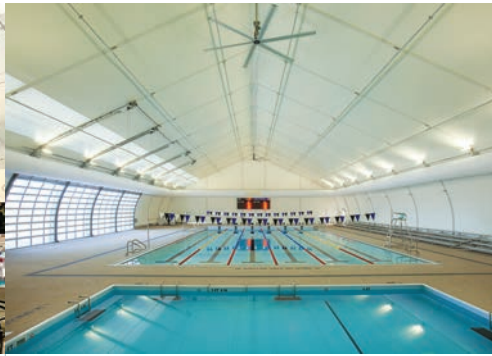
Turn your existing outdoor pool into a year round aquatic center.

North America toll free:
+ 1 800 528 9899
 US direct dial:
+ 1 801 280 1555
 Canada direct dial:
+ 1 403 601 2292

info@sprung.com

Community Pool Enclosures

A Faster Way to Build
Engineered & Manufactured by Sprung Instant Structures



**Philip S. Miller Park
Town of Castle Rock, Colorado
110' wide x 105' long**

The population of Castle Rock has tripled in the past 10 years and needed a new Aquatic Center. A Sprung structure was built for the new aquatic center, in conjunction with a 64,000 sq. ft. athletic facility. Sprung was the ideal solution for the long term growth needs in a town with strict building and architectural codes.

The year round facility features encapsulated insulation, and a bright interior with daylight panels in the peak and large windows on the building face.

Sprung was chosen for their ability to meet a tight construction time-line with a high quality structure that met their budget needs.

The center features two water-slides, four swimming lanes and a vortex pool.

**Centennial Aquatic Centre
Collingwood, Ontario
90' wide x 210' long**

Collingwood had a outdoor pool measuring 25 meters long by 12 meters wide, with a water capacity of 540,000 liters, that was built in 1967.

In 2013, the community wanted to enclose the pool to extend its use year-round.

In 6 months the outdoor pool was enclosed and a new accessible warm-water pool was added to create a year round Aquatic Center.

**Kearns Oquirrh Park Fitness Center - Utah
120' wide x 195' long**

The new 23,400 square foot state of the art swim facility features a Salem Blue Kynar membrane wave pattern on the bottom and tan Dupont Tedlar Membrane complete with a custom skylight, seating for over 1,000, connector to existing facility, state of the art sound system and full color, 22 mm, video capable 8' x 16' scoreboard.

Kearns was extremely impressed with the options that could be integrated into a Sprung. The structure includes a sprinkler system and has a custom inverted lighting package that utilizes the highly reflective and tensioned inner liner to uniquely diffuse the lighting, eliminating blind spots during polo meets that would occur in traditional buildings from the past.

The Structure was erected over a completely full Olympic sized 50 meter pool. This pool has racing lanes and is also being utilized by local schools to host polo championships that in the past had to be out of state to avoid the weather.



Sprung Instant Structures, Inc.
5711 West Dannon Way
West Jordan, Utah 84081

Toll Free: 1 800 528 9899
Direct Dial: 1 801 280 1555
Fax: 1 801 280 7072

Sprung Instant Structures Ltd.
PO Box 62, 80039 Maple Leaf Road
Aldersyde, Alberta, Canada
TOL OAO

Toll Free: 1 800 528 9899
Direct Dial: 1 403 601 2292
Fax: 1 403 601 4833

Sprung Structures DWC-LLC
PO Box 712185, Dubai, United Arab Emirates
Telephone: +971 508312274

Sprung Instant Structures E.C.
Office 45 Building 225, Road 28, Block 328
Siqqayyah Manama 999, Bahrain BH 26105
Telephone: +973 39511127

North America toll free:
+ 1 800 528 9899
US direct dial:
+ 1 801 280 1555
Canada direct dial:
+ 1 403 601 2292

info@sprung.com