

# Homeless Navigation Centers

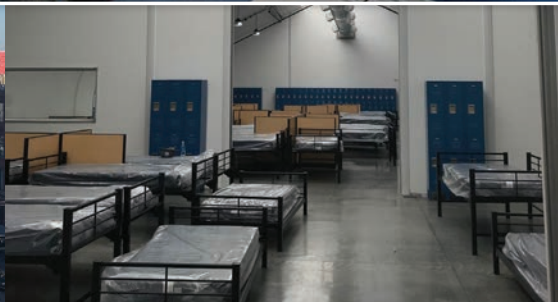


Designed as a complement to the "Housing First" model, a Sprung Navigation Center becomes the vital bridge between life on the streets and an affordable housing unit.

## A Faster Way to Build



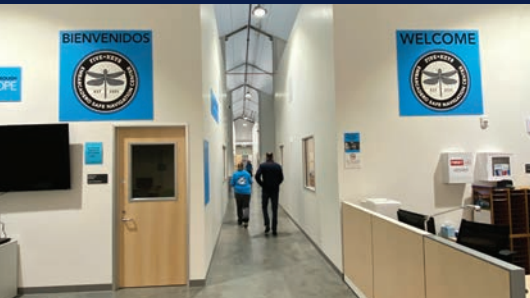
Lease or purchase



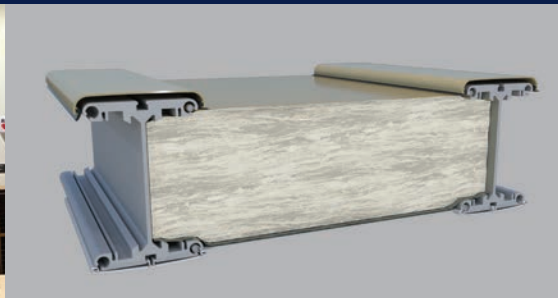
Large clearspan interiors



Window and door options



Interior space can be reconfigured as needed



Optional highly efficient fiberglass insulation system



Immediate delivery from inventory



### A Faster Way to Build

Engineered, relocatable structures designed for immediate homeless navigation centers.

North America toll free:  
**1 800 528.9899**  
US direct dial:  
**801 280.1555**  
Canada direct dial:  
**403 601.2292**

[info@sprung.com](mailto:info@sprung.com)

# HOMELESS Navigation Centers

A Faster Way to Build  
Engineered & Manufactured by Sprung Instant Structures



**Waianae Civic Center  
PAI'OLU KAI'AULU  
Leeward Coast, Hawaii**

The center, opened in 2007 by Hawaii Gov. Linda Lingle, is operated by the United States Veterans Initiative, the nation's largest non-profit provider of services to veterans facing challenges in their transition to civilian life. It provides housing and transitional programs to approximately 275 people.

*"There's so much need on the island to help homeless veterans," Martin said. She said another center at Barbers Point houses homeless singles, but the Waianae Civic Center is the first to service both homeless veterans and their families."*

**San Diego Homeless Project  
City of San Diego, California  
60' wide by 120' long**

- Father Joes Village
- 50' wide by 275' long
- Alpha Project
- 60' wide by 195' long
- Veterans Village of San Diego

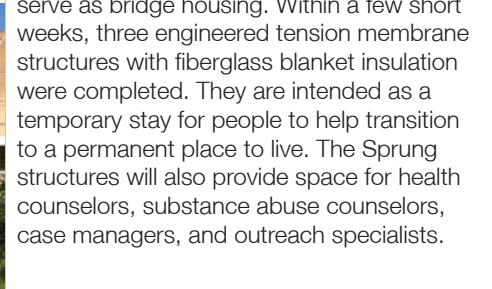
The City of San Diego needed an immediate interim housing solution to get a significant number of homeless people off the streets and transitioned to affordable/permanent housing. As there was a health epidemic, Hepatitis A, it was critical to have a solution as soon as possible.

The City of San Diego teamed up with a group of political and business leaders to push for an immediate solution consisting of three fully insulated Sprung structures with fiberglass blanket insulation were completed. They are intended as a temporary stay for people to help transition to a permanent place to live. The Sprung structures will also provide space for health counselors, substance abuse counselors, case managers, and outreach specialists.

**San Francisco Bridge Structures  
60' wide x 75' long  
60' wide x 135' long**

The City of San Francisco has been working diligently to help relieve the problem of homelessness affecting the city. Using a former parking lot under the Van Ness on ramp, construction of a 150 bed Homeless Navigation Center has been built.

The two Sprung Structures provide space for 150 beds, a kitchen, pantry, offices and conference rooms where health officials and case workers interact with the residents of the center as more stable housing placements are identified and assigned. The site also features a large deck, outdoor seating, and gardens.



**Sprung Instant Structures, Inc.**  
5711 West Dannon Way  
West Jordan, Utah 84081

Toll Free: 1 800 528.9899  
Direct Dial: 1 801 280.1555  
Fax: 1 801 280.7072

**Sprung Instant Structures Ltd.**  
PO Box 62, Maple Leaf Road  
Aldersyde, Alberta, Canada T0L 0A0

Toll Free: 1 800 528.9899  
Direct Dial: 1 403 601.2292  
Fax: 1 403 601.4833

**Sprung Structures DWC-LLC**  
PO Box 712185, Dubai, United Arab Emirates  
Telephone: +971.508312274

**Sprung Instant Structures E.C.**  
Office 45 Building 225, Road 28, Block 328  
Siqqayyah Manama 999, Bahrain BH 26105  
Telephone: 9 733 951 1127

North America toll free:  
**1 800 528.9899**  
US direct dial:  
**801 280.1555**  
Canada direct dial:  
**403 601.2292**

[info@sprung.com](mailto:info@sprung.com)