

# Community Arenas



## A Faster Way to Build

Superior performing playing environment



Bright interiors



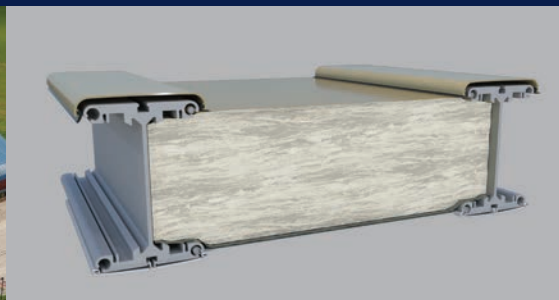
Tall peak height



Second floor viewing level



Exterior color options



Optional highly efficient fiberglass insulation system



Entrance vestibules



### A Faster Way to Build

## High Performance Affordable Community Arena Solutions

North America toll free:  
**+ 1 800 528 9899**  
US direct dial:  
**+ 1 801 280 1555**  
Canada direct dial:  
**+ 1 403 601 2292**

[info@sprung.com](mailto:info@sprung.com)

# Ice Arenas

A Faster Way to Build  
Engineered & Manufactured by Sprung Instant Structures



**Edge School – Alberta, Canada**  
**One - 120' wide x 229' long**  
**Two - 120' wide x 215' long**

The Edge School is a private institution with a mission to provide students from Grade 6 to 12 with a purposeful integration of excellence in academics, athletics and character-building.

Several years ago the school expanded their property and looked to traditional construction for classrooms, two NHL-sized hockey rinks and a gymnasium. When the plans were developed, the project costs exceeded their available budget by \$10 million. The architect and project manager approached Sprung for an alternative proposal. After careful consideration, three 120' wide Sprung structures were provided and erected with a net savings of \$7 million. The decision to use Sprung allowed the Edge School expansion to go forward on budget and on time.

*"Our Sprung arenas have far exceeded our expectations in terms of look, feel and performance."*

*"We absolutely hit a HOME RUN with Sprung Instant Structures."*

Brent R. M. Devost  
Founder, President & CEO Edge School

**Piikani Nations - Ice Rink**  
**Brockett, Alberta**  
**130' wide x 350' long**

This southern Alberta location experiences significant wind loads often in excess of 100 miles per hour.

Constructed in 80 days this 39,650 sq. ft. multipurpose centre was designed and built to meet 110 mph sustained wind loads.

The full sized ice rink has:

- Seating for 448 people
- Concessions and prep area
- Large graphics package
- 6 dressing rooms, 4 men's and 2 woman's
- Referee room
- Offices
- Rentable rooms

**Central Park Arena**  
**Collingwood, Ontario**  
**120' wide x 310' long**

Collingwood now has a second ice rink for year-round use, located in Central Park, to complement the Eddie Bush Arena.

The new rink is a full size, 85' wide x 200' long ice surface, complete with premium dasher boards and glass. There is interior spectator seating for 390 people, and a mezzanine lounge for viewing. The arena includes six dressing rooms for players, as well as a dedicated female dressing room. The referee room is capable of accommodating eight referees. The lounge can be rented for special events and presentations.



**Sprung Instant Structures, Inc.**  
5711 West Dannon Way  
West Jordan, Utah 84081

Toll Free: 1 800 528 9899  
Direct Dial: 1 801 280 1555  
Fax: 1 801 280 7072

**Sprung Instant Structures Ltd.**  
PO Box 62, Maple Leaf Road  
Aldersyde, Alberta, Canada T0L 0A0

Toll Free: 1 800 528 9899  
Direct Dial: 1 403 601 2292  
Fax: 1 403 601 4833

**Sprung Structures DWC-LLC**  
PO Box 712185, Dubai, United Arab Emirates  
Telephone: +971 508312274

**Sprung Instant Structures E.C.**  
Office 45 Building 225, Road 28, Block 328  
Siqqayyah Manama 999, Bahrain BH 26105  
Telephone: +973 3951 1127

North America toll free:  
**+ 1 800 528 9899**  
US direct dial:  
**+ 1 801 280 1555**  
Canada direct dial:  
**+ 1 403 601 2292**

[info@sprung.com](mailto:info@sprung.com)