

# Oil & Gas



28,000 ton frac sand storage facility

## A Faster Way to Build



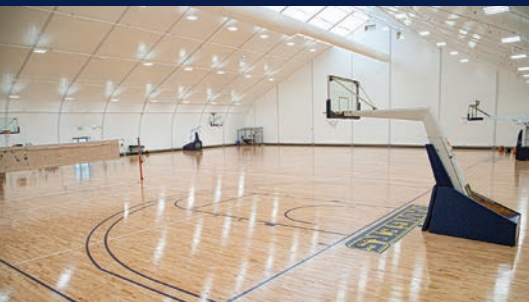
Remote processing facilities



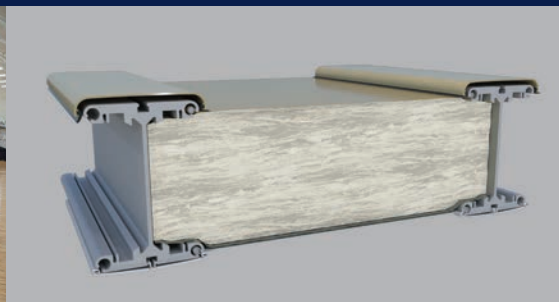
Aircraft hangars



Warehousing



Man camp recreation



Optional highly efficient fiberglass insulation system



Safety meeting and break rooms



### A Faster Way to Build

Engineered relocatable structures provide immediate solutions for the oil and gas industry.

North America toll free:  
**1 800 528.9899**

US direct dial:  
**801 280.1555**

Canada direct dial:  
**403 601.2292**

[info@sprung.com](mailto:info@sprung.com)

# Oil & Gas

A Faster Way to Build  
Engineered & Manufactured by Sprung Instant Structures



**TranSand Inc, Horn River, BC**  
**140' wide x 305' long**

In 2008, TranSand Inc. located in Camrose, Alberta, was formed to meet the demands of the local frac sand storage and transfer facilities. TranSand was the first company to step up and develop a frac sand storage and transfer facility in Northern British Columbia. TranSand manages the facility on a 24/7 basis and handles the incoming and out-going frac sand to the field.

*"TranSand Inc. had approached Sprung to assist them by designing and constructing a storage facility that would be capable of storing over 20,000 tons of frac sand. A consorted and collaborative effort between Sprung and TranSand led to the development of such a facility. With Sprung designing and supplying the superior structure and TranSand designing the facility, setting it up, managing it and both companies being versatile in constructing such a facility, it has shown to be an industry leader in the frac sand storage business!"*

**Marathon Oil**  
**Dunn Center & New Town, North Dakota**  
**Two - 60' wide x 105' long**  
**Two - 80' wide x 165' long**

Marathon Oil needed an immediate on-site warehousing solution to store temperature sensitive parts at two of their North Dakota locations. Sprung Structures was called upon to supply two 60' wide x 105' long fully insulated structures complete with 12' wide x 16' high rolling service door and an attached 10' wide x 12.5' long office for the warehouse manager. Speed of delivery and construction were important factors in selecting Sprung for these projects. After receiving the order the structures arrived on-site, ready to be erected, 7 days later. Marathon Oil was so impressed with their first two structures that when they needed to expand, they ordered two more 80' wide x 165' long structures for both their locations.

The translucent daylight panels provide an optimum amount of daylight, which enhances the interior working environment, and a fiberglass insulation system lowers operating costs. Sprung structures provide an immediate reliable on-site warehousing solution for oil and gas companies working in remote locations.

**Shell**  
**Carmon Creek**  
**90' wide x 180' long**

Work force housing solutions at remote oil and gas facilities demand more and more recreational facilities for staff.

Sprung supplied an 90' wide x 180' long multipurpose gymnasium, which includes free weight area, lockers, change rooms and multiple hardwood floor basketball courts.



**Sprung Instant Structures, Inc.**  
5711 West Dannon Way  
West Jordan, Utah 84081

Toll Free: 1 800 528.9899  
Direct Dial: 1 801 280.1555  
Fax: 1 801 280.7072

**Sprung Instant Structures Ltd.**  
PO Box 62, Maple Leaf Road  
Aldersyde, Alberta, Canada T0L 0A0

Toll Free: 1 800 528.9899  
Direct Dial: 1 403 601.2292  
Fax: 1 403 601.4833

**Sprung Structures DWC-LLC**  
PO Box 712185, Dubai, United Arab Emirates  
Telephone: +971.508312274

**Sprung Instant Structures E.C.**  
Office 45 Building 225, Road 28, Block 328  
Siqqayyah Manama 999, Bahrain BH 26105  
Telephone: 9 733 951 1127

North America toll free:  
**1 800 528.9899**  
US direct dial:  
**801 280.1555**  
Canada direct dial:  
**403 601.2292**

[info@sprung.com](mailto:info@sprung.com)