



**Build
Faster**

OTTAWA HOSPITAL CIVIC CAMPUS

OFFLOAD MEDICINE TRANSITION UNIT (OMTU)



Your healthcare structure solution, engineered and manufactured by Sprung Structures



Build
Faster

About The Project

THE CLIENT

The Ottawa Civic Hospital is one of three main campuses of The Ottawa Hospital, along with the General and Riverside campuses. With 549 beds, the Civic Campus has the region's only adult-care trauma center, serving eastern Ontario, the Outaouais region of Quebec and eastern Nunavut. The Civic Campus also houses the University of Ottawa Heart Institute, which provides cardiac care for patients at The Ottawa Hospital.

www.ottawahospital.on.ca - OMTU structure

www.colliersprojectleaders.com/projects/temporary-40-bed-unit-ottawa#gref

THE ASK

During the COVID-19 pandemic, the Civic Campus was facing longer offload times and more overcrowding in the Emergency Department, in part because there were record numbers of patients in hospital beds who were unable to be moved to long-term care.

To expand the campus' capacity, decrease patient wait times and improve ambulance responsiveness, Infrastructure Ontario and The Ottawa Hospital joined forces in the fall of 2020 to erect a temporary Offload Medicine Transition Unit (OMTU).



We need this capacity while we get through COVID and some of the impacts it has had."

– Cameron Love, CEO of The Ottawa Hospital





HOW SPRUNG DELIVERED

The OMTU is a 10,800-square-foot, 40-bed Sprung structure that now sits in a parking lot beside the Civic Campus. The structure serves as a fully operational facility to support the Civic Campus' Emergency Department, taking on the overflow of patients requiring care. It includes four staff stations with seating, desktop computers for up to 12 employees, a staff lounge, washroom facilities, showers, a negative-pressure isolation room, and its own ambulance intake area for patient offloading.

Built to withstand the highly variable seasons of the Canadian climate, the OMTU is also equipped with mechanical systems to allow oxygen/suction at each headwall, a nurse call system, and local paging and emergency power, replicating most of the required infrastructure of a hospital. The unit immediately eliminated the chronic problems of long ambulance offload times and overcrowding in the Emergency Department.

THE SPECS

90' wide x 120' long | Fully insulated
Two connecting corridors - upper corridor 11'6" x 18'
and lower corridor 11'6" x 25'



The Ottawa Hospital has enough surge capacity to be able to care for upwards of 220 COVID-19 patients. We hope to never get there, but we are well prepared if we have to."

– Ottawa Hospital



**WATCH VIDEO OTTAWA HOSPITAL
TEMPORARY BED UNIT:**

<https://youtu.be/CmLTGRpYWHc>

sprung.com | 1 800 528 9899 | info@sprung.com



Sprung Knows Healthcare Facilities

We have a proven track record with numerous structures around the world. See Sprung in action at:



To learn more visit:
sprung.com/structures/emergency-field-hospitals



The Sprung Difference

► SPRUNG CARES

Our teams work in some of the most vulnerable environments and harshest conditions. At Sprung, we are deeply committed to positively impacting the communities we serve, and applying our innovative ideas to help solve complex problems.

► UNMATCHED REPUTATION

Invest in the world's most reliable, versatile and technically advanced structures: Sprung has erected 12,000 structures in more than 100 countries.

► ENGINEERED FOR EXTREME CLIMATES

Sprung structures are engineered to withstand extreme weather conditions.

► IMMEDIATE DELIVERY FROM INVENTORY

Complete projects in a much shorter time frame than conventional construction.

► CUSTOMIZABLE

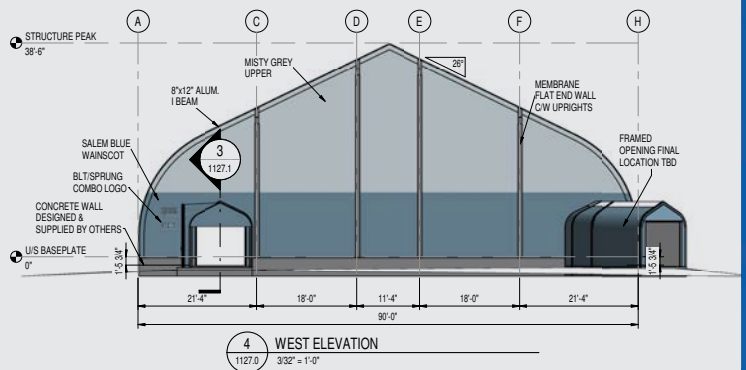
Customizations include performance insulation packages for superior indoor climate control, peak integrated daylight panels, doors and entryways for every application, and countless accessories.

► LIMITED FOUNDATION REQUIREMENTS

Save on foundation costs where appropriate soil conditions exist. Concrete foundations are not required for Sprung structures up to 160 ft. in width, saving time and cost for installation.

► COST-EFFECTIVE, COMPACT SHIPPING

Enjoy the convenience and cost savings of shipping up to 15,000 sq. ft. in a single, standard ISO container or flatbed truck.





About Sprung

Sprung Structures provides rapid-response buildings to a wide range of leading businesses and organizations including global armed forces, the natural resources industry, the manufacturing, commercial gaming and education sectors, disaster recovery, healthcare and aviation, as well as to the sports and recreation industry. Our patented tensioned membrane technology outperforms other building alternatives with a faster, better build.

Sprung has designed and patented tensioned membrane technology that outperforms other building alternatives and offers a faster, better build.

You can trust us to design and manufacture your facility with speed and quality that will exceed your expectations. Our clients demand it, our history proves it. In business since 1887, Sprung has completed over 12,000 structures in more than 100 countries.



**Build
Faster**