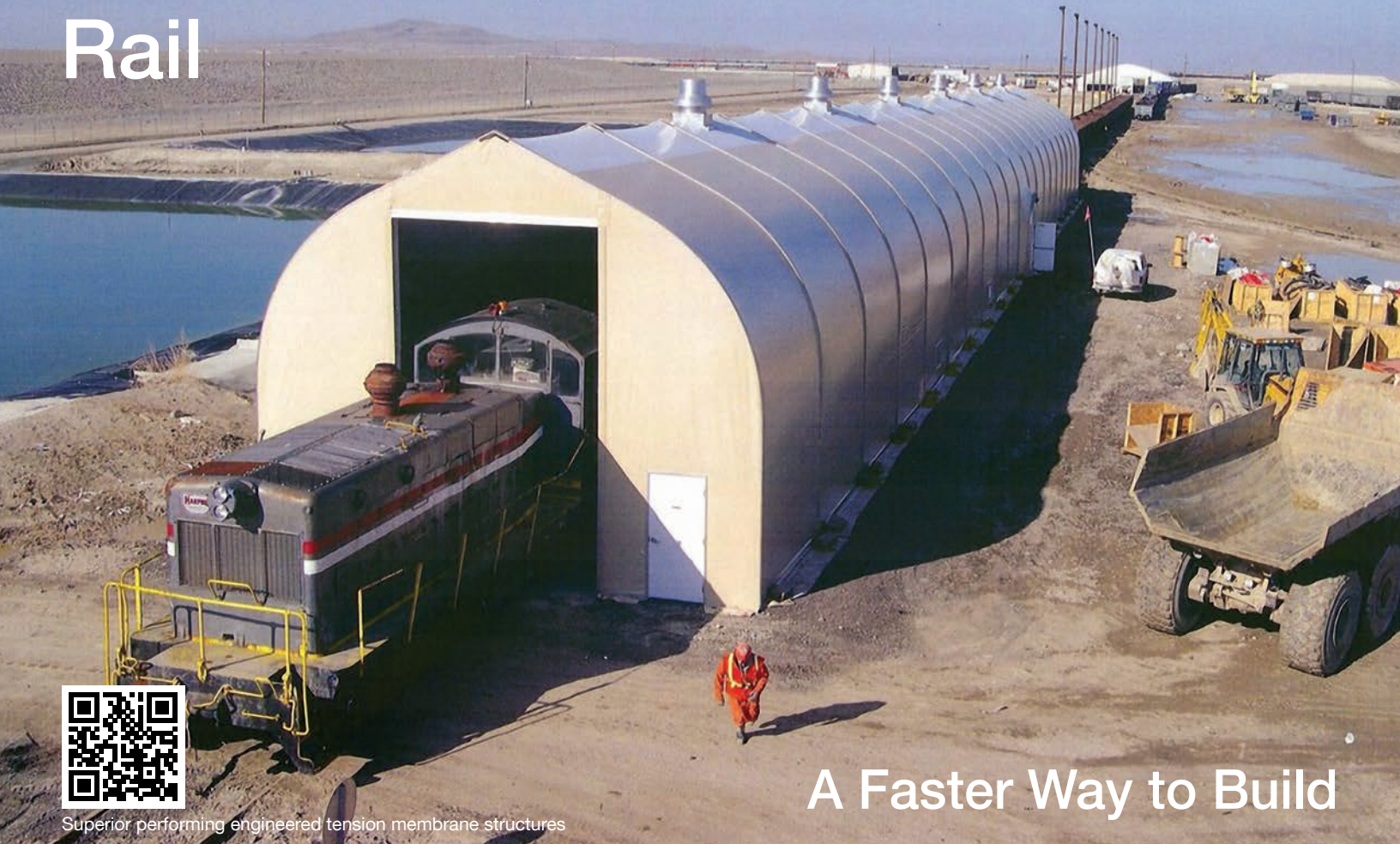


Rail



Superior performing engineered tension membrane structures

A Faster Way to Build



Remote processing facilities



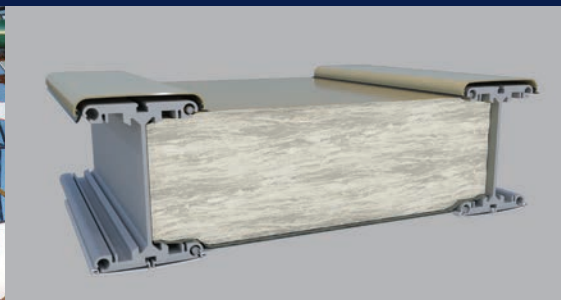
Lease or purchase



Large clearspan interiors



Widths 30' to 200' by any length



Optional highly efficient fiberglass insulation system



Immediate delivery from inventory



A Faster Way to Build

Engineered relocatable tension membrane structure technology. Immediate delivery from inventory.

North America toll free:
+ 1 800 528 9899
 US direct dial:
+ 1 801 280 1555
 Canada direct dial:
+ 1 403 601 2292

info@sprung.com

Rail

A Faster Way to Build
Engineered & Manufactured by Sprung Instant Structures



Kennecott Mine Rail Car Repair
Bingham, Utah
9.2' wide x 50' long
with 5' 6" leg extensions

Kennecott needed a structure to shelter rail cars, often carrying product, for maintenance and overhauls. The structure was erected on the rail system allowing the cars to roll in one end and out the other.

The construction area was very narrow, with low hanging power lines that could not be removed. Sprung's versatile design allowed the structure to be built within the confined work area without sacrificing the functional requirements for the facility. Some of the factors for choosing Sprung include:

- Speed of delivery and construction
- Durability in harsh climates
- Relocatable structure design
- The over-all strength of the structure in a MSHA and high elevation mine site

Canadian Pacific Railway
St. Paul, Minnesota

Canadian Pacific Railway changes out the wheel assemblies on their railcars in an outside area at their facility in St. Paul. Minnesota winters are notoriously severe, so CPR needed to provide shelter for their technicians and equipment. The shelter needed to be placed over an existing working pit in the ground with rails running throughout the area and multiple structures nearby.

The soil conditions were less than desirable, so extra earth anchors were located at each base to meet the required loadings. A large electrical panel outside of the 40' width needed to be accounted for. The area wouldn't accommodate a wider structure, so Sprung designed a 14'-3" wide x 5' long vestibule to enclose the electrical panel. Sprung also provided 6' long leg extensions to accommodate the height requirements of the numerous railcar dimensions. A side sliding cargo door was added to allow side access to the pit area.

Environmental Remediation
Utah
30' wide x 300' long

Rail cars carrying contaminated soil arrive for off loading at this National Remediation Facility. This fully insulated 30' x 300' Signature Series Sprung structure, complete with a 6' leg, is utilized to heat rail cars carrying frozen contaminated soil during winter months, making it possible to remove the soil for processing.



Sprung Instant Structures, Inc.
5711 West Dannon Way
West Jordan, Utah 84081

Toll Free: 1 800 528 9899
Direct Dial: 1 801 280 1555
Fax: 1 801 280 7072

Sprung Instant Structures Ltd.
PO Box 62, Maple Leaf Road
Aldersyde, Alberta, Canada T0L 0A0

Toll Free: 1 800 528 9899
Direct Dial: 1 403 601 2292
Fax: 1 403 601 4833

Sprung Structures DWC-LLC
PO Box 712185, Dubai, United Arab Emirates
Telephone: +971 508312274

Sprung Instant Structures E.C.
Office 45 Building 225, Road 28, Block 328
Siqqayyah Manama 999, Bahrain BH 26105
Telephone: +973 3951 1127

North America toll free:
+ 1 800 528 9899
US direct dial:
+ 1 801 280 1555
Canada direct dial:
+ 1 403 601 2292

info@sprung.com