

# Automotive



Large clear-span interiors, 30' to 200' by any length.

**Build Faster**



Dealership hail and sun shelters



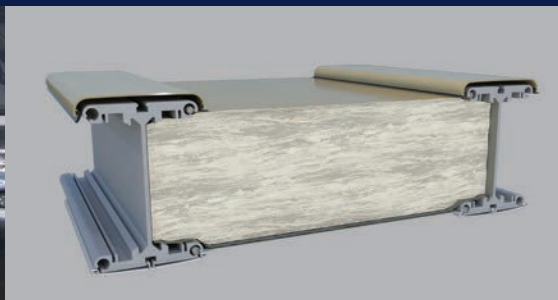
Optional large branding graphics



Daylight panels in peak create bright interiors



Drive-through service bay



Optional highly efficient fiberglass insulation system



Optional glazing walls



**Build  
Faster**

Engineered, relocatable structures  
designed for the automotive industry.  
Lease or purchase.

North America toll free:  
**+ 1 800 528 9899**  
US direct dial:  
**+ 1 801 280 1555**  
Canada direct dial:  
**+ 1 403 601 2292**

[info@sprung.com](mailto:info@sprung.com)



# Automotive

**Build Faster**

Engineered & Manufactured by Sprung Instant Structures



## **AutoNation Littleton, Colorado**

Two AutoNation dealerships in Littleton, Colorado were faced with the decision to start a new remodel to update both of their existing dealership facilities.

As a solution, Sprung Structures put together an innovative solution for AutoNation Ford and AutoNation Jeep Chrysler to keep them running efficiently for approximately 8 to 12 months.

The AutoNation Ford Dealership erected a 50' wide x 105' long Sprung structure including 8" fiberglass insulation, glass entrance doors and glazing glass walls. Additionally, a large deck was constructed adjacent to the structure to enjoy weekend barbecues and year round customer appreciation venues.

The AutoNation Jeep Chrysler Dealership (located a few miles away) chose to erect two Sprung structures. A 4,500 sqft insulated sales office with large glazing glass walls on both flat ends and a 40' wide x 45' long non-insulated structure connected by a 10' connecting corridor. Four large Rolling Service Door bays, two at each end, serve as a VIP quality car care center offering "out of weather" pick-up and drop-off service.



## **Tesla Inc. - California 150' wide x 915' long**

Tesla needed to add additional production capacity immediately, for their new model 3 vehicle, in Fremont, California.

Tesla had two existing Sprung structures and decided that a 150' wide x 915' long Sprung structure was the fastest solution.

The structure was delivered and constructed in 19 days. An assembly line was constructed inside the structure in conjunction with the structure erection. Production was able to start while the finishing touches on the structure were completed.

*"No standard automotive solution could be built in time," said Musk, "so we created a new solution. It is working and has slightly higher quality than the more traditional general assembly line. Perhaps most surprising is that the total cost of production in the Sprung is lower."*

*"Amazing work by the Tesla team. Built entire new general assembly plant in three weeks with minimal resources"*  
- Elon Musk



## **Mercedes-Benz Vance, Alabama Vehicle Preparation Center 60' wide x 130' long**

The Mercedes-Benz Manufacturing facility in Vance, Alabama, needed additional space to install after market items on new SUV's. Due to the quick construction, future flexibility and cost effectiveness, Mercedes chose to use a Sprung Structure which includes an energy efficient insulation system.



**Sprung Instant Structures, Inc.**  
5711 West Dannon Way  
West Jordan, Utah 84081

Toll Free: 1 800 528 9899  
Direct Dial: 1 801 280 1555  
Fax: 1 801 280 7072

**Sprung Instant Structures Ltd.**  
PO Box 62, 80039 Maple Leaf Road  
Aldersyde, Alberta, Canada  
T0L 0A0

Toll Free: 1 800 528 9899  
Direct Dial: 1 403 601 2292  
Fax: 1 403 601 4833

**Sprung Structures DWC-LLC**  
PO Box 712185, Dubai, United Arab Emirates  
Telephone: +971 508312274

**Sprung Instant Structures E.C.**  
Office 45 Building 225, Road 28, Block 328  
Siqqayyah Manama 999, Bahrain BH 26105  
Telephone: +973 39511127

North America toll free:  
**+ 1 800 528 9899**  
US direct dial:  
**+ 1 801 280 1555**  
Canada direct dial:  
**+ 1 403 601 2292**

**info@sprung.com**