

# Education



Build Faster



Lease or purchase



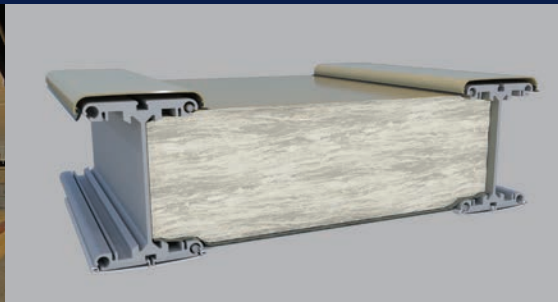
Complementary hood graphics



Widths 30' to 200' by any length



Clearspan interiors



Optional highly efficient fiberglass insulation system



Exterior color options



Engineered, relocatable structures designed for educational applications worldwide. Sprung's rust-free aluminum substructure comes with a 50-year, pro-rata guarantee.

North America toll free:  
**1 800 528.9899**  
 US direct dial:  
**801 280.1555**  
 Canada direct dial:  
**403 601.2292**

[info@sprung.com](mailto:info@sprung.com)



# Education

**Build Faster**  
Engineered & Manufactured by Sprung Instant Structures



**Harvard University, Massachusetts  
Interim Dining  
80' wide x 110' long**

Harvard Business School's Kresge Hall, which was built in the 1950s and served primarily as an executive education dining center, was slated to be torn down to make space for a replacement facility. While the Business School stood to gain an important new building, a pressing question became what to do in the interim.

The Harvard Business School needed a solution that could be mobilized quickly, cost effectively, sustainably and, above all, not look like a temporary solution. The interim dining facility needed to fit well aesthetically with other buildings on campus.

After much deliberation, Harvard Business School opted to go with a Sprung structure and high-tech modular kitchen structures whose refined finishes and exterior appearance fit the university's objectives.

Sprung and Kitchens to Go (KTG) teamed up to supply an 80' x 110' wide Sprung structure.



**Dartmouth College, New Hampshire  
Student Center  
60' wide x 75' long**

Dartmouth College was looking to add a cutting edge, cost effective and energy efficient building solution for study groups, small club events and a casual place for the students to unwind.

The high tech look of the 60' wide by 75' long Sprung Structure Student Center made an immediate impact with students. The combination of a tall peak height, translucent daylight panels and glazing wall provides a bright, spacious, relaxing interior where students can relax.



**West Point Grey Academy  
Vancouver, BC  
Upper Gymnasium  
70' wide by 120' long**

As this building is located on first nations land, this structure is considered a temporary facility with a 10 year plan for use. When West Point Grey Academy added the gymnasium they also include an outdoor learning commons space. During the excavation for the commons space indigenous artifacts were found and an archeological assessment had to be done.

The structure is being used as a full-time gym and part time auditorium. It has two 60' wide x 8' high glazing walls and two 14'3" wide x 12'6" long vestibules for storage.



**Sprung Instant Structures, Inc.**  
5711 West Dannon Way  
West Jordan, Utah 84081

Toll Free: 1 800 528.9899  
Direct Dial: 1 801 280.1555  
Fax: 1 801 280.7072

**Sprung Instant Structures Ltd.**  
PO Box 62, Maple Leaf Road  
Aldersyde, Alberta, Canada T0L 0A0

Toll Free: 1 800 528.9899  
Direct Dial: 1 403 601.2292  
Fax: 1 403 601.4833

**Sprung Structures DWC-LLC**  
PO Box 712185, Dubai, United Arab Emirates  
Telephone: +971.508312274

**Sprung Instant Structures E.C.**  
Office 45 Building 225, Road 28, Block 328  
Siqqayyah Manama 999, Bahrain BH 26105  
Telephone: 9 733 951 1127

North America toll free:  
**1 800 528.9899**  
US direct dial:  
**801 280.1555**  
Canada direct dial:  
**403 601.2292**

[info@sprung.com](mailto:info@sprung.com)