

Fire Stations



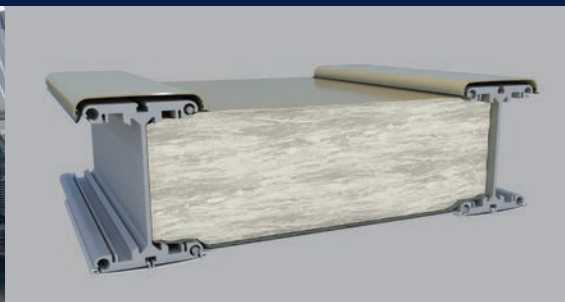
Build Faster



Available immediately from inventory

Large clearspan interiors

Daylight panels in peak allow natural light



Widths 30' to 200' by any length

Optional highly efficient fiberglass insulation system

Rolling service doors



Build Faster

Engineered, relocatable structures designed for municipality and community fire stations.

North America toll free:
1 800 528.9899
 US direct dial:
801 280.1555
 Canada direct dial:
403 601.2292

info@sprung.com

Fire Stations

Build Faster
Engineered & Manufactured by Sprung Instant Structures



San Diego Fire Rescue City of San Diego

The City of San Diego is building new, and renovating several, fire stations throughout the city.

During construction and renovation Sprung Structures are being utilized as a temporary fire station for each location. San Diego utilizes Sprung structures because they are relocatable, durable and flexible.

- Temporary Fire Station #17
30' wide by 45' long uninsulated
- Temporary Fire Station #5
30' wide by 60' long uninsulated
- Temporary Fire Station #22
30' wide by 45' long uninsulated
- Temporary Fire Station #45

This Sprung structure was relocated from another location to be near Qualcomm Stadium in San Diego, improving response time in a highly populated area until the permanent station could be built.



San Francisco Fire Department 60' wide by 75' long

This developing area within the City of San Francisco required a fire station.

The mayor of San Francisco issued an emergency order to get this done quickly.

Sprung structures provided the clear-span open garage to house four fire trucks.

The structure is uninsulated with two garage doors, daylight panels for extra light and has no foundations.



Salt Lake City Fire Department Salt Lake City, Utah 130' wide x 150' long

Salt Lake City encompasses over 90 square miles of land, which is quite challenging when it comes to fire-fighting coverage. The city currently operates 14 stations that are strategically located throughout the city. The department also has a fleet of reserve apparatus and equipment that is scattered throughout the city. Their goal was to have all of the reserve equipment and apparatus stored and staged at one central location.

Sprung provided a 19,500 ft² clear span warehouse they refer to as their Logistics Building. It houses all reserve apparatus, hose, and equipment necessary to re-stock their stations when time is of the essence. In addition to the apparatus and equipment, personnel of the Logistics Division will maintain office space necessary to maintain and update inventory, and to provide prompt delivery of apparatus and equipment to their stations.



Sprung Instant Structures, Inc.
5711 West Dannon Way
West Jordan, Utah 84081

Toll Free: 1 800 528.9899
Direct Dial: 1 801 280.1555
Fax: 1 801 280.7072

Sprung Instant Structures Ltd.
PO Box 62, Maple Leaf Road
Aldersyde, Alberta, Canada T0L 0A0

Toll Free: 1 800 528.9899
Direct Dial: 1 403 601.2292
Fax: 1 403 601.4833

Sprung Structures DWC-LLC
PO Box 712185, Dubai, United Arab Emirates
Telephone: +971.508312274

Sprung Instant Structures E.C.
Office 45 Building 225, Road 28, Block 328
Siqqayyah Manama 999, Bahrain BH 26105
Telephone: 9 733 951 1127

North America toll free:
1 800 528.9899
US direct dial:
801 280.1555
Canada direct dial:
403 601.2292

info@sprung.com