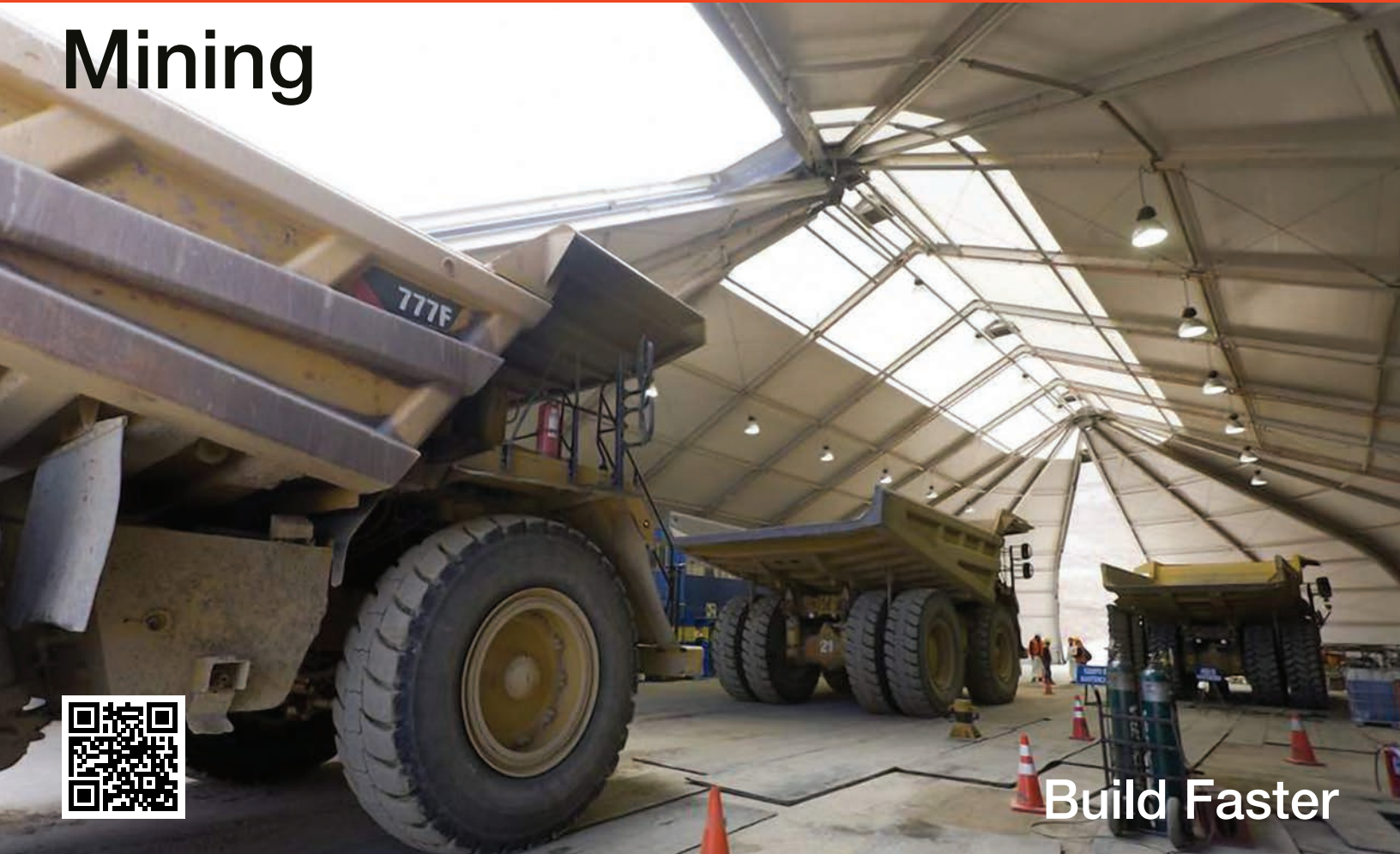


Mining



Build Faster



Crusher/chiller enclosures



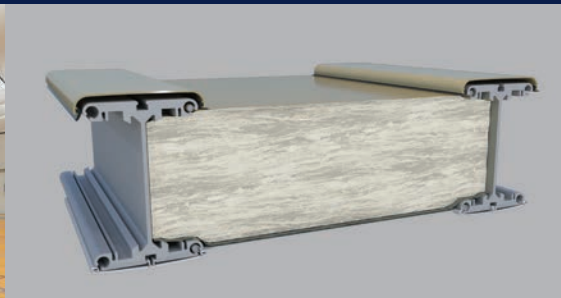
Storage and warehousing



Large clearspan interiors



Recreational facilities



Optional highly efficient fiberglass insulation system



Break and safety meeting rooms



- Widths 30' to 200' by any length.
- Rust proof aluminum substructure comes with a 50-year pro-rata guarantee.
- Clear span, relocatable design.
- Immediate delivery from inventory. Lease or purchase.

North America toll free:
1 800 528.9899
 US direct dial:
801 280.1555
 Canada direct dial:
403 601.2292

info@sprung.com

Mining

Build Faster

Engineered & Manufactured by Sprung Instant Structures



Resolution Copper Mine - Superior, AZ
40' wide x 48' long
80' wide x 158' long

Sprung supplied the structures for the winch and hoist houses at this mine site. These structures are traditionally steel buildings but Sprung structures were selected for their speed of delivery and construction, unique crane liftable features and engineered relocatable design. The overall construction was much easier utilizing the Sprung product.

Previously, Sprung structures have been used as on-site warehousing for long lead items and now will be used as the winch house and hoist house. The mine will sink 10 shafts some 7000 feet and leap frog the structures from shaft to shaft.

The 40' wide x 48' long structure was used as warehousing first then crane lifted into place for the winch house. The 80' wide x 158' long structure covers the hoist house and the electrical building. The flexibility of the Sprung structure design made Sprung the right choice for the Resolution Copper.

Haul Truck Workshop and Warehouse
Pilbara, Western Australia
100' wide x 357' long
100' wide x 400' long

This mining client was looking for a temporary haul truck maintenance facility. The relocatable clearspan design of Sprung structures really appealed to their design team.

Sprung shipped on schedule and the structure was erected in the time frame suggested, in spite of the harsh conditions in Western Australia. The structures are well liked by the staff working inside, with natural light provided through the translucent daylight panels in the peak of the structure. Though planned as a temporary workshop facility, the exterior Dupont Tedlar membrane will see them though 25 plus years and can be relocated and reconfigured as required. Sprung's in-house design team created 6 large entry points on the side of the structure to maximize logistics and space.

Rio Tinto, Oyu Tolgoi Mine - Mongolia
120' wide x 460' long

Rio Tinto needed to procure an immediate solution for warehousing in Mongolia that could withstand high wind loads and extreme temperature variations.

A 36 m x 140 m (120' wide x 460' long) Sprung structure complete with 23 cm (9 inch) thick insulation package was delivered within 4 weeks of their order.

The structure was constructed in winter conditions with a low temperature membrane designed exclusively for winter construction.

This Sprung structure warehouse was used to start a new phase of the Oyu Tolgoi project. The grand opening was attended by the President of Mongolia as well as the CEO of Rio Tinto.



Sprung Instant Structures, Inc.
 5711 West Dannon Way
 West Jordan, Utah 84081

Toll Free: 1 800 528.9899
 Direct Dial: 1 801 280.1555
 Fax: 1 801 280.7072

Sprung Instant Structures Ltd.
 PO Box 62, Maple Leaf Road
 Aldersyde, Alberta, Canada T0L 0A0

Toll Free: 1 800 528.9899
 Direct Dial: 1 403 601.2292
 Fax: 1 403 601.4833

Sprung Structures DWC-LLC
 PO Box 712185, Dubai, United Arab Emirates
 Telephone: +971.508312274

Sprung Instant Structures E.C.
 Office 45 Building 225, Road 28, Block 328
 Siqqayyah Manama 999, Bahrain BH 26105
 Telephone: 9 733 951 1127

North America toll free:
1 800 528.9899
 US direct dial:
801 280.1555
 Canada direct dial:
403 601.2292

info@sprung.com