

Data Centers



Insulated crypto mining facility

Build Faster



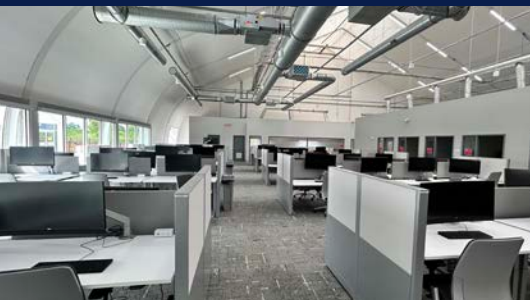
Spacious, clear-span interiors



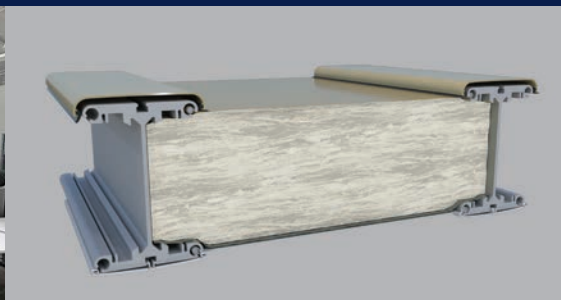
Optional dining/food service facilities



Built within weeks



Optional office space



Optional highly efficient fiberglass insulation system



Environmentally controlled



- Limited foundation requirements
- Widths 30' to 200' by any length
- Airtight building envelope
- Prompt delivery

North America toll free:
+ 1 800 528 9899
 US direct dial:
+ 1 801 280 1555
 Canada direct dial:
+ 1 403 601 2292

info@sprung.com

Data Centers

Build Faster
Engineered & Manufactured by Sprung Structures



**Riot Whinstone
Rockdale, Texas**

Two 100' wide x 810' long structures

Inside each football-field-length warehouse are thousands of computers buzzing like worker bees, mining almost nonstop to create Bitcoin. Riot Whinstone is an unusually large mining facility in Rockdale, Texas, just an hour northeast of Austin. Riot Blockchain is focused on supporting the Bitcoin ecosystem through proof-of-work mining. Riot continues to build on the progress made towards its 400 MW expansion project. Riot's immersion cooled Bitcoin mining progress includes Building F and Building G, the first erected immersion-cooled dedicated building, now with over 10,000 S19j Pros deployed.

**Intel Corporation
Costa Rica, China and USA
88' wide x 360' long**

Founded in 1968, Intel Corporation is one of the world's largest manufacturers of semiconductor chips, and is an industry leader in creating technology that enables global progress.

Over the years, Intel has benefited greatly from the innovation and versatility of Sprung's offerings and has utilized our structures in its operations around the world. Intel leased a Sprung structure in 1997 and exercised the option to purchase it a year later. In 2006, after nine years of using the structure as an office building, Intel dismantled it and used part of it to build a lunchroom/cafeteria for its Costa Rica-based employees.

When Intel performed a massive, \$8 billion upgrade at its plants in Hillsboro, Oregon, and Chandler, Arizona, the company opted to build lunchroom structures large enough to accommodate more than 1,950 people.

**Blue Origin
Aerospace Research and Development
Kent, Washington**

With a creative and talented workforce that grew from 750 to nearly 3,000 in less than three years, Blue Origin needed more space—quickly. The company wanted to build a sustainable, high-tech facility to serve as its headquarters and R&D space. The resulting 225,000-square-foot Sprung structure was built and move-in ready in only 11 months.

Completed on time and on budget, the stunning structure features ample office space, as well as a garden, fitness facilities, an auditorium and diverse areas where employees can relax, collaborate and socialize.

"This is a very sustainable building, with better insulation and better energy consumption than a traditional building. And it all came together very quickly."

Bob Smith, Blue Origin CEO

"It's a fresh and amazing design that brings many teammates together into one space. It feels like the outdoors are indoors, with so much space above and around me."

Team Member, Blue Origin



Sprung Instant Structures, Inc.
5711 West Dannon Way
West Jordan, Utah 84081

Toll Free: 1 800 528 9899
Direct Dial: 1 801 280 1555
Fax: 1 801 280 7072

Sprung Instant Structures Ltd.
PO Box 62, Maple Leaf Road
Aldersyde, Alberta, Canada T0L 0A0

Toll Free: 1 800 528 9899
Direct Dial: 1 403 601 2292
Fax: 1 403 601 4833

Sprung Structures DWC-LLC
PO Box 712185, Dubai, United Arab Emirates
Telephone: +971 508312274

Sprung Instant Structures E.C.
Office 45 Building 225, Road 28, Block 328
Siqqayyah Manama 999, Bahrain BH 26105
Telephone: +973 3951 1127

North America toll free:
+ 1 800 528 9899
US direct dial:
+ 1 801 280 1555
Canada direct dial:
+ 1 403 601 2292

info@sprung.com