

# Office



Lobby and reception area featuring glazing wall and atrium.

## Build Faster



Large assortment of window options



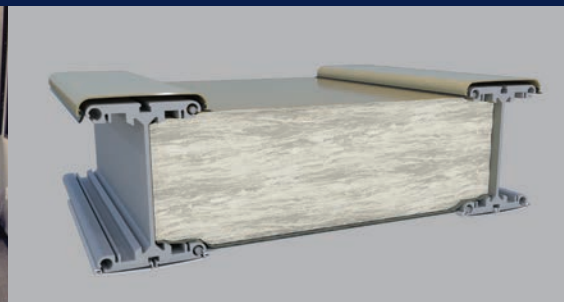
Dining/food services



Reception/lobby



Boardroom overlooking basketball courts



Optional highly efficient fiberglass insulation system



Office and distribution facility



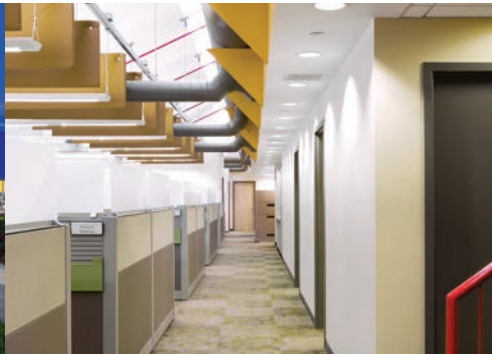
Engineered, relocatable structures designed to provide immediate office and administration buildings worldwide.

North America toll free:  
**+ 1 800 528 9899**  
 US direct dial:  
**+ 1 801 280 1555**  
 Canada direct dial:  
**+ 1 403 601 2292**

[info@sprung.com](mailto:info@sprung.com)

# Office

**Build Faster**  
Engineered & Manufactured by Sprung Instant Structures



## Blue Origin Aerospace Research and Development Kent, Washington

Their creative and talented workforce grew from 750 to nearly 3000 in less than three years. Blue Origin needed to build a high-tech, sustainable facility to inspire and support 1500 team members.

This 225,000 square-foot Sprung structure was built and was move-in ready in only 11 months. Blue Origin's building was completed on time and on budget. Features include a garden, fitness facilities, an auditorium and diverse areas to relax, collaborate and socialize with team members from across the company.

*"This is a very sustainable building with better insulation and better energy consumption than a traditional building. And it all came together very quickly."*

Bob Smith, Blue Origin CEO

*"It's a fresh and amazing design that brings many teammates together into one space. It feels like the outdoors are indoors, with so much space above and around me."*

Team Member, Blue Origin

## Rockefeller University New York City

Rockefeller University, is one of the foremost research centers in the world, contributing to 23 Nobel Prizes as well as numerous other awards. The fully insulated 60' wide x 132' long Signature series Sprung structure is utilized as swing laboratory space during campus renovations for approximately 5 years. The Sprung structure allowed the University to keep their labs on campus rather than renting space in another part of the city. Part of the research philosophy at Rockefeller encourages the different laboratories to collaborate on research which would be more difficult if all the labs were not on the same campus.

The University poured a concrete pad on a seldom used tennis court and started erecting the Sprung structure in December of 2006. The Sprung portion of the project was completed by January of 2007 and features 5 lab/private offices, 104 cubicles, a mezzanine level that houses 2 conference rooms, a large assembly space, a media room and storage.

## Enerplus Watford City, North Dakota

Existing local offices, accommodations and maintenance facilities are simply unavailable in the booming oil and gas region of North Dakota.

Enerplus looked to Sprung Structures to provide an immediate solution to having an "all in one" facility that encapsulated all their corporate needs at this remote site.

This 50' wide x 170' long Sprung structure was designed, manufactured and delivered to site within two weeks of order, allowing construction to start immediately.

- 7 large offices and large conference room
- Spacious lobby/waiting area,
- Server room
- Utility and file rooms
- Kitchen and large break room
- Recreation space
- 6 bedrooms each with en-suite bathroom
- R25 insulation
- Dupont Tedlar exterior architectural membrane.



**Sprung Instant Structures, Inc.**  
5711 West Dannon Way  
West Jordan, Utah 84081

Toll Free: 1 800 528 9899  
Direct Dial: 1 801 280 1555  
Fax: 1 801 280 7072

**Sprung Instant Structures Ltd.**  
PO Box 62, Maple Leaf Road  
Aldersyde, Alberta, Canada T0L 0A0

Toll Free: 1 800 528 9899  
Direct Dial: 1 403 601 2292  
Fax: 1 403 601 4833

**Sprung Structures DWC-LLC**  
PO Box 712185, Dubai, United Arab Emirates  
Telephone: +971 508312274

**Sprung Instant Structures E.C.**  
Office 45 Building 225, Road 28, Block 328  
Siqqayyah Manama 999, Bahrain BH 26105  
Telephone: +973 3951 1127

North America toll free:  
**+ 1 800 528 9899**  
US direct dial:  
**+ 1 801 280 1555**  
Canada direct dial:  
**+ 1 403 601 2292**

[info@sprung.com](mailto:info@sprung.com)