

# Ski Resorts

High-performance structures built in a fraction of the time.

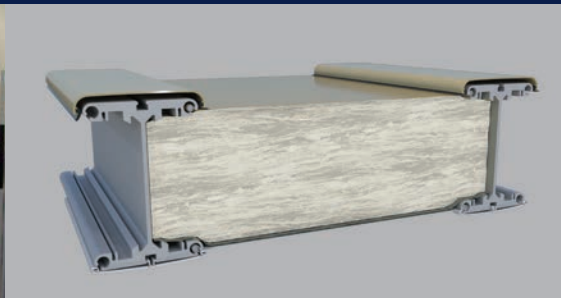


Tension membrane structures designed for flexibility.

## Build Faster



Day Lodges • Dining • Rental Shops • Childcare Centers • Administration • Maintenance • Retail



Optional integrated daylight panels, high-performance insulation packages, glazing walls and more.



## Build Faster

- Designed to shed snow
- Superior indoor climate control
- Flexible and relocatable
- Purchase or lease

North America toll free:  
**1 800 528.9899**  
 US direct dial:  
**801 280.1555**  
 Canada direct dial:  
**403 601.2292**

[info@sprung.com](mailto:info@sprung.com)

# Ski Resorts

**Build Faster**  
Engineered & Manufactured by Sprung Instant Structures

**TAOS SKI LODGE**



**Taos Ski Lodge, NM**  
**Retail Facility**  
**70' wide x 150' long**

Taos Ski Valley needed a new welcome center, retail and rental shop during renovations (approximately 5 years) as the ski area was recently purchased by new owners and was receiving a major face lift to the tune of \$350 million.

After considering other building alternatives, speed of construction and wow factor made Sprung the solution of choice for this ski lodge application. Constructed in 4 months, this Sprung structure, features R25 fiberglass blanket insulation, two sets of automatic entry doors along with a unique Dupont Tedlar color combination (Desert Tan and Sky Blue wainscot) and glazing walls.

The center houses the Visitor's Center, the Taos Ski Valley Chamber of Commerce offices, Ski and Boot Doctor, Seasonal Lockers, Andean Software and rental shop.

Taos Ski retail shop



**ARIZONA SNOWBOWL SKI RESORT**



**Arizona Snowbowl Ski Resort, AZ**  
**Fremont Restaurant and Bar**  
**50' wide x 90' long**

This resort's newest restaurant and bar isn't just for the ski-in crowd – it's also a beautiful year-round venue for weddings and special events.

Snowbowl needed a fast solution for mid-mountain dining. Speed was critical, but they also wanted the new facility to be insulated, visually pleasing, let in natural light and showcase the outdoor views. It also had to meet strict USDA Forest Service building codes. Sprung checked all the boxes.

In just four weeks, the 4,500 sq. ft. Fremont Sprung structure was erected in a secluded ski-in, ski-out location. This new space was built to accommodate 150 people for dinner service and 200 for cocktail receptions. Large windows provide plenty of natural daylight and celebrate the stunning landscape. A 19'2" connector bridges to a kitchen trailer, and the insulated structure supports everything needed for comfortable year-round dining and events.

Fremont dining and year-round event venue



**BLUE MOUNTAIN RESORT**



**Blue Mountain Resort, PA**  
**Day lodge and guest services complex**  
**50' wide x 185' long**  
**70' wide x 95' long**  
**Two - 60' wide x 225' long**

Nestled between Lehigh valley and the Pocono Mountains, Blue Mountain resort is home to Pennsylvania's highest vertical drop at 1082 feet. With the increased popularity of tubing, Blue mountain needed an immediate day lodge to accommodate tubers adjacent to ski lifts.

With the immediate positive impact of the tube park day lodge, Blue mountain began phase two of their expansion and moved several of their service areas to the base of the mountain. The facility uses two connecting corridors to attach three Sprung structures to their existing facilities. The complex is called Frontier Center and houses a rental shop, ticketing, child care, snack bar, and a locker area.

Blue Mountain rental shop



**Sprung Instant Structures, Inc.**  
5711 West Dannon Way  
West Jordan, Utah 84081

Toll Free: 1 800 528.9899  
Direct Dial: 1 801 280.1555  
Fax: 1 801 280.7072

**Sprung Instant Structures Ltd.**  
PO Box 62, 80039 Maple Leaf Road  
Aldersyde, Alberta, Canada T0L 0A0

Toll Free: 1 800 528.9899  
Direct Dial: 1 403 601.2292  
Fax: 1 403 601.4833

**Sprung Structures DWC-LLC**  
P.O. Box 712185, Dubai, United Arab Emirates  
Telephone: +971.508312274

**Sprung Instant Structures E.C.**  
P.O. Box 26105, Manama, Kingdom of Bahrain  
Telephone: 9 733 951 1127  
Email: uae@sprung.com

North America toll free:  
**1 800 528.9899**  
US direct dial:  
**801 280.1555**  
Canada direct dial:  
**403 601.2292**

[info@sprung.com](mailto:info@sprung.com)