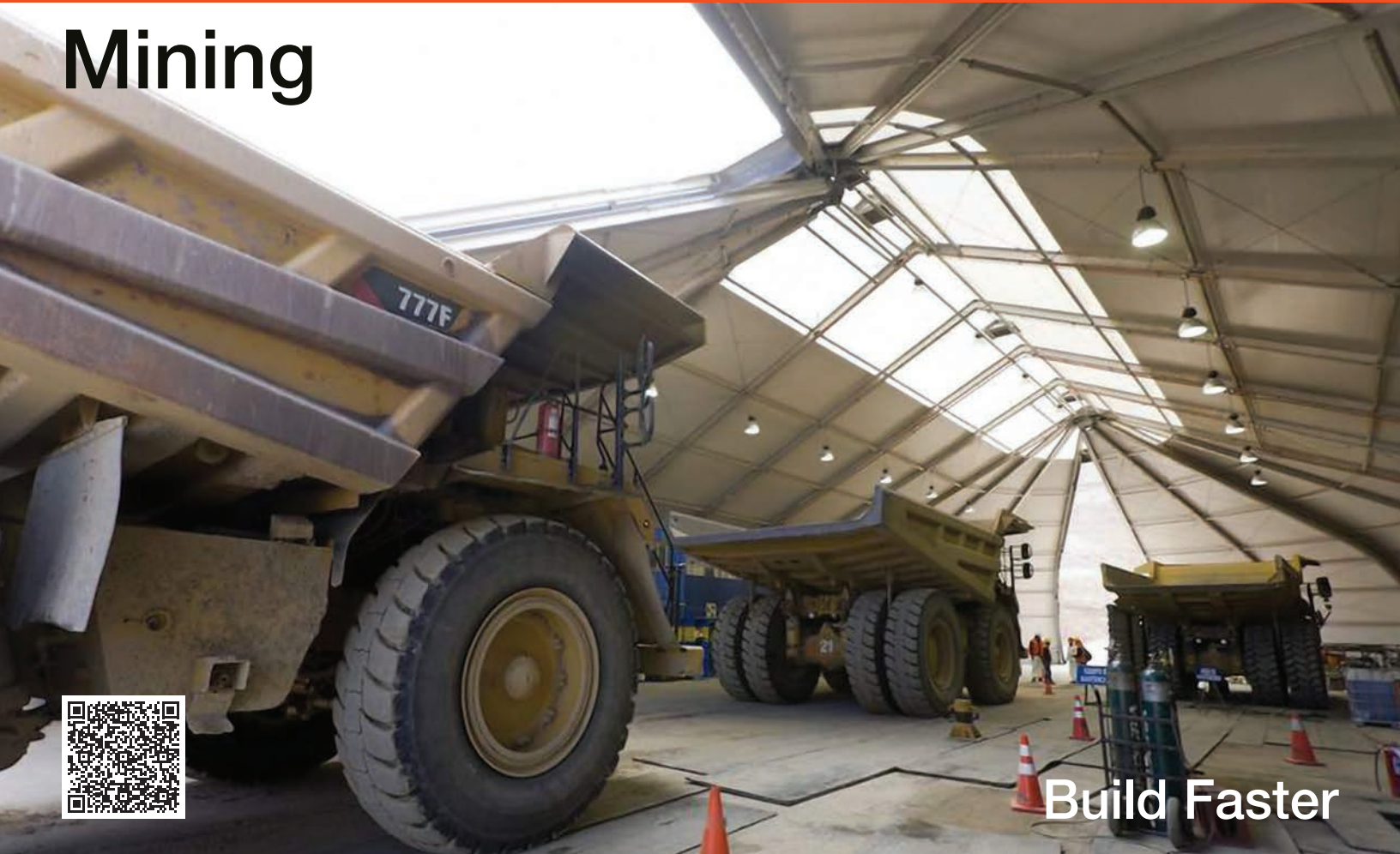


Mining



Build Faster



Crusher/chiller enclosures



Storage and warehousing



Large clear-span interiors



Recreational facilities



Haul truck maintenance



Break and safety meeting rooms



**Build
Faster**

Sprung's patented, tensioned-membrane structures deliver exceptional energy efficiency, rapid installation and clear-span interiors that maximize flexibility and performance. Cost-effective, relocatable and built to last, a Sprung building is a temporary or permanent solution that saves time and money.

North America toll free:
1.800.528.9899
US direct dial:
801.280.1555
Canada direct dial:
403.601.2292

info@sprung.com

Mining

Build Faster

Engineered & Manufactured by Sprung Structures



Resolution Copper Mine
Superior, Arizona
40' wide x 48' long
80' side x 158' long

Sprung supplied Resolution Copper Mine in Arizona with two structures that now serve as the operation's winch and hoist houses. The structures were selected in large part for their speed of delivery and construction, their unique crane-liftable features and their engineered, relocatable design.

Prior to serving as a winch house and hoist house, the structures were used for on-site warehousing. The 40' x 48' structure was then crane-lifted into place for the winch house. And the 80' x 158' structure covers the hoist house and the electrical building. The flexibility of the Sprung structures' design made them the right choice for the Resolution Copper team.



Pilbara Mine Site
Pilbara, Western Australia
100' wide x 357' long
100' wide x 400' long

Stakeholders at a mine site in Pilbara, Australia were looking for a temporary haul-truck maintenance facility and selected two Sprung structures as their solution of choice, due to the structures' relocatable, clear-span design.

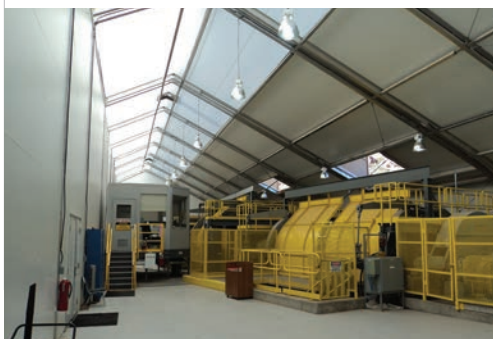
Delivered on schedule, the Sprung structures were erected within the desired time frame, in spite of the harsh conditions in Western Australia. Serving as a warehouse and workshop respectively, the structures feature ample natural light and a number of large, rolling service doors in order to maximize logistics and space. Though these structures are meant to serve as a temporary haul-truck maintenance facility, their exterior Dupont Tedlar membranes will see the client through 25-plus years and can be relocated and reconfigured as required.



Oyu Tolgoi Mine
Umnugovi Province, Mongolia
120' wide x 460' long

When the Rio Tinto group needed a warehouse structure for a new phase of its Oyu Tolgoi gold and copper mine, they turned to Sprung for a solution. Due to the mine's location in Mongolia, the structure had to be able to withstand high winds and extreme temperature variations. Speed of delivery and weather durability were both critically important.

Designed and delivered within four weeks of order placement, the fully insulated, 120' x 460' structure features four protective doors with an all-weather hood system, as well as Sprung's exclusive low-temperature winter membrane. Earth anchors were delivered in advance and installed so that structure assembly could begin immediately upon arrival of the components.



Sprung Instant Structures, Inc.
5711 West Dannon Way
West Jordan, Utah 84081

Toll Free: 1.800.528.9899
Direct Dial: 1.801.280.1555
Fax: 1.801.280.7072

Sprung Instant Structures Ltd.
PO Box 62, Maple Leaf Road
Aldersyde, Alberta, Canada T0L 0A0

Toll Free: 1.800.528.9899
Direct Dial: 1.403.601.2292
Fax: 1.403.601.4833

Sprung Structures DWC-LLC
PO Box 712185, Dubai, United Arab Emirates
Telephone: +971.508312274

Sprung Instant Structures E.C.
Office 45 Building 225, Road 28, Block 328
Siqqayyah Manama 999, Bahrain BH 26105
Telephone: 9.733.951.1127

North America toll free:
1.800.528.9899
US direct dial:
801.280.1555
Canada direct dial:
403.601.2292

info@sprung.com