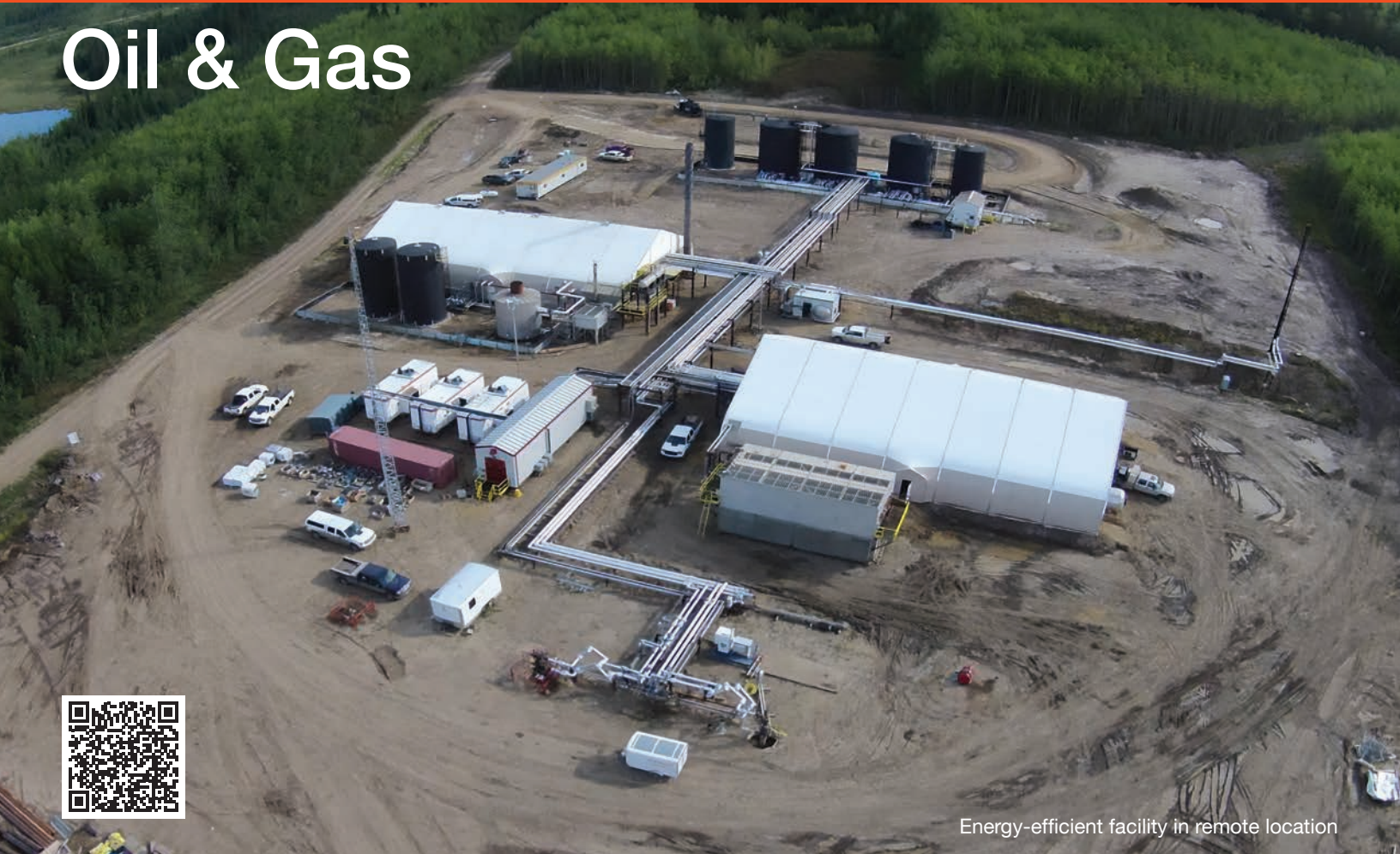


Oil & Gas



Energy-efficient facility in remote location



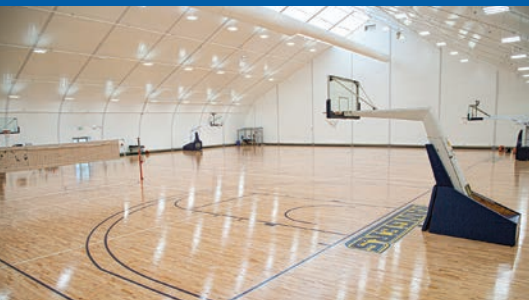
Remote processing facilities



Aircraft hangars



Warehousing



Crew camp recreation



Haul truck maintenance



Safety meeting and break rooms



**Build
Faster**

Our high-performing, tensioned-membrane structures provide immediate building solutions for the oil and gas industry.

North America toll free:
1.800.528.9899

US direct dial:
801.280.1555

Canada direct dial:
403.601.2292

info@sprung.com

Oil & Gas

Build Faster

Engineered & Manufactured by Sprung Structures



Doyon Drilling Warm Warehouse Alaska's North Slope 80' wide x 105' long

Doyon Drilling, Inc. (DDI) needed a heated warehouse where the company could receive and store critical components prior to the arrival of its new drilling rig on Alaska's North Slope. The company had a strict budget and was concerned about the requirements and costs associated with traditional building foundations, as the structure would be sitting on permafrost. DDI turned to Sprung for a solution.

Sprung provided an 80' x 105' structure that took just 29 days to assemble. To address foundation concerns, DDI used a cross-laminated timber floor system in combination with Sprung's earth anchors to secure the structure, thus preventing disturbance to the permafrost below. In anticipation of northern Alaska's extreme low temperatures, DDI purchased two very costly heaters to maintain the required temperature inside the structure. But, thanks to Sprung's exceptional insulation properties and energy efficiency, DDI returned one of the heaters, as one was easily enough to provide and maintain warmth inside the warehouse.



Marathon Oil Dunn Center & New Town, North Dakota Two - 60' wide x 105' long Two - 80' wide x 165' long

Marathon Oil needed an immediate on-site warehousing solution to store temperature-sensitive parts at two of its North Dakota locations. Sprung was called upon to supply two fully insulated, 60' x 105' structures, each with a 12' x 16' rolling service door and an attached 10' x 12.5' office for the warehouse manager. Speed of delivery and construction were important factors in selecting Sprung for these structures, which were delivered on-site, ready to be erected, just seven days after the order was received.

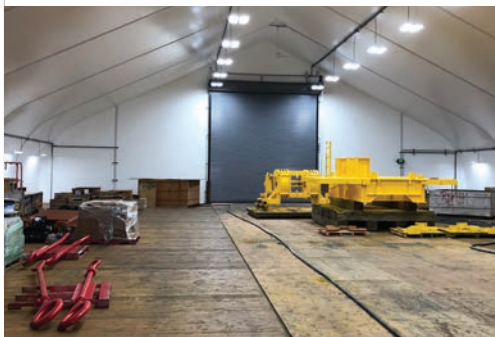
Impressed with its first two Sprung buildings, Marathon Oil ordered two more structures (each measuring 80' x 165') when it needed to expand at both locations. The translucent daylight panels in all four structures provide an optimum amount of daylight, which enhances the interior working environment, and a fiberglass insulation system lowers operating costs.



Shell Canada Carmon Creek 90' wide x 180' long

When stakeholders at Shell wanted to support and enhance employee well-being at a remote project site in northern Alberta, they turned to Sprung for help in providing a state-of-the-art recreational facility to add to their workforce camp.

Sprung designed and delivered a fully insulated, 90' x 180' gymnasium structure that provides staff with a bright, spacious and welcoming place for working out or playing sports. The clear-span, multi-purpose structure includes a free weight area, lockers, change rooms and multiple basketball courts with hardwood flooring.



Sprung Instant Structures, Inc.
5711 West Dannon Way
West Jordan, Utah 84081

Toll Free: 1.800.528.9899
Direct Dial: 1.801.280.1555
Fax: 1.801.280.7072

Sprung Instant Structures Ltd.
PO Box 62, Maple Leaf Road
Aldersyde, Alberta, Canada T0L 0A0

Toll Free: 1.800.528.9899
Direct Dial: 1.403.601.2292
Fax: 1.403.601.4833

Sprung Structures DWC-LLC
PO Box 712185, Dubai, United Arab Emirates
Telephone: +971.508312274

Sprung Instant Structures E.C.
Office 45 Building 225, Road 28, Block 328
Siqqayyah Manama 999, Bahrain BH 26105
Telephone: +973 39511127

North America toll free:
1.800.528.9899
US direct dial:
801.280.1555
Canada direct dial:
403.601.2292

info@sprung.com