

# Manufacturing



Large clear-span interiors. 30' to 200' by any length.



Connecting corridors



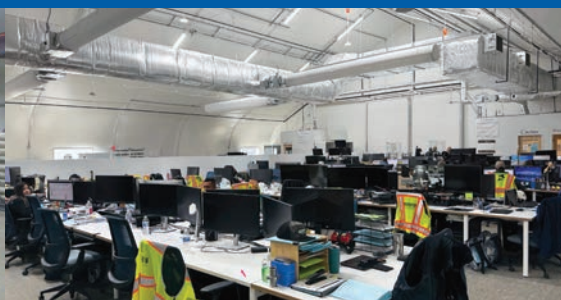
Dining/food services facilities



Manufacturing facilities



Fabrication



Office space



On-site warehousing



**Build  
Faster**

Engineered structures designed  
to expand capacity immediately  
at manufacturing facilities worldwide.

North America toll free:  
**1.800.528.9899**  
US direct dial:  
**801.280.1555**  
Canada direct dial:  
**403.601.2292**

[info@sprung.com](mailto:info@sprung.com)



# Manufacturing

**Build Faster**

Engineered & Manufactured by Sprung Structures



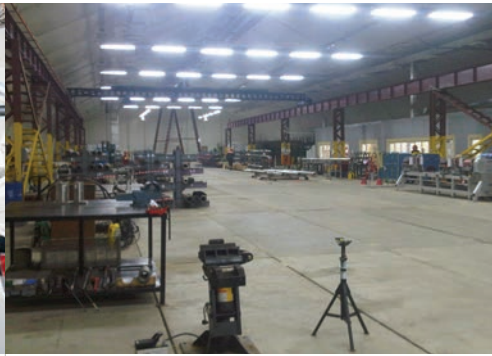
**Tesla Inc.**  
Fremont, California  
150' wide x 915' long

When Tesla needed to immediately expand production capacity for its new Model 3 vehicle, the company turned to Sprung for help. Having already collaborated with Sprung on two existing structures, leaders at Tesla knew that choosing Sprung again would be the fastest and most efficient solution to its urgent production space needs.

Sprung designed a 150' x 915' production facility, which was delivered and built in just 19 days. An assembly line was constructed inside the structure as exterior work continued, enabling production of the vehicles to start while the structure itself was being finished.

*"No standard automotive solution could be built in time, so we created a new solution. It is working and has a ... higher quality than the more traditional general assembly line. Perhaps most surprising is that the total cost of production in the Sprung is lower."*

- Elon Musk



**Weatherford International**  
Siberia  
100' wide x 470' long

Weatherford International needed an immediate facility for its Siberian gas field operations. After reviewing a number of building options, it was determined that a Sprung structure was the ideal solution due to its speed of delivery and construction as well as Sprung's proven track record in remote locations. The clear-span design was also an important requirement to accommodate a large gantry crane.

Sprung supplied a 100' x 470' structure that includes a nine-inch-thick layer of formaldehyde-free fiberglass blanket insulation, a full-height interior partition and three 16' x 16' rolling service doors. The facility, which houses a full-scale machine shop, crane and storage racking, and a calibration room, also features a low-temperature arctic membrane, designed exclusively for cold-weather applications.



**Skanska/Intel**  
Arizona and Oregon  
120' wide x 270' long

When Skanska, one of the world's leading project development and construction companies, undertook an \$8 billion project involving upgrades to Intel's chip-making plants in Hillsboro, Oregon, and Chandler, Arizona, Sprung was approached for assistance. Skanska and Intel needed temporary spaces for various applications while construction took place on both sites. Among the six buildings Sprung provided was a 120' x 270' non-insulated structure to house an on-site lunchroom facility, with a capacity to accommodate 1,954 people.



**Sprung Instant Structures, Inc.**  
5711 West Dannon Way  
West Jordan, Utah 84081

Toll Free: 1.800.528.9899  
Direct Dial: 1.801.280.1555  
Fax: 1.801.280.7072

**Sprung Instant Structures Ltd.**  
PO Box 62, Maple Leaf Road  
Aldersyde, Alberta, Canada T0L 0A0

Toll Free: 1.800.528.9899  
Direct Dial: 1.403.601.2292  
Fax: 1.403.601.4833

**Sprung Structures DWC-LLC**  
PO Box 712185, Dubai, United Arab Emirates  
Telephone: +971.508312274

**Sprung Instant Structures E.C.**  
Office 45 Building 225, Road 28, Block 328  
Siqayyah Manama 999, Bahrain BH 26105  
Telephone: +973.39511127

North America toll free:  
**1.800.528.9899**  
US direct dial:  
**801.280.1555**  
Canada direct dial:  
**403.601.2292**

[info@sprung.com](mailto:info@sprung.com)